

Ashland Dog Park

Memorial Drive

Ashland, MA 01721

October 1, 2024

PERMIT SET for PLANNING BOARD AND CONSERVATION COMMISSION REVIEW

Client

Town of Ashland,

101 Main Street

Ashland, MA 01721

Landscape Architect

Radner Design Associates, Inc.

3 Allied Drive, Suite 303

Dedham, MA 02026

ph: 508.736.6144

Civil Engineer

Highpoint Engineering, Inc.

980 Washington Street, Suite 216

Dedham, MA 02026

ph: 781.770.0970

Surveyor and Wetlands Delineation

Hancock Associates, Inc.

315 Elm Street

Marlborough, MA 01752

SHEET INDEX

TO	LIMITED TOPOGRAPHIC PLAN
C100	SITE PREPARATION & EROSION CONTROLS
C200	UTILITY PLAN
C300	CONSTRUCTION DETAILS
L1.0	MATERIALS PLAN
L2.0	LAYOUT PLAN
L3.0	GRADING PLAN
L4.0	ENLARGEMENT PLAN
L5.0	PLANTING DETAILS AND SCHEDULES
L5.1	PLANTING PLAN
L6.1	DETAILS 1
L6.2	DETAILS 2

SITE PREPARATION AND EROSION CONTROL NOTES

- EXISTING CONDITIONS BY HANCOCK ASSOCIATES, MARLBOROUGH, MA
- CONTRACTOR SHALL REVIEW DRAWINGS AND SPECIFICATIONS TO DETERMINE THE TOTAL SCOPE OF WORK AND ALL REQUIRED COORDINATION PRIOR TO THE START OF WORK.
- CONTRACTOR SHALL VERIFY UTILITY LOCATIONS PRIOR TO START OF WORK. REPORT ANY DISCREPANCIES IN WRITING TO THE LANDSCAPE ARCHITECT AND RECEIVE INSTRUCTIONS PRIOR TO PROCEEDING.
- CONTRACTOR IS RESPONSIBLE FOR A THOROUGH SITE INVESTIGATION TO VERIFY EXISTING SITE CONDITIONS AND ITEMS TO BE REMOVED PRIOR TO BIDDING AND BEFORE COMMENCEMENT OF WORK.
- CONTRACTOR SHALL CALL OR EMPLOY DIG SAFE TO ESTABLISH PRESENCE AND LOCATION OF EXISTING UTILITIES, AND SHALL OBTAIN CERTIFICATION NUMBERS FROM SUCH COMPANIES INDICATING THAT ALL EXISTING UTILITIES HAVE BEEN LOCATED AND MARKED.
- INSTALL EROSION CONTROL MEASURES PRIOR TO CONSTRUCTION. EROSION CONTROL SHALL BE MAINTAINED IN GOOD WORKING ORDER FOR THE DURATION OF THE PROJECT AND SHALL BE INSPECTED, REPAIRED AND/OR MAINTAINED BY THE CONTRACTOR WITHIN 12 HOURS OF EACH STORM EVENT. CLEAN OUT CATCH BASINS, DRAIN MANHOLES, STORM DRAIN PIPES AS NECESSARY DURING CONSTRUCTION AND AFTER COMPLETION OF CONSTRUCTION.
- FILL AND TOPSOIL SHALL BE STOCKPILED ON SITE. STOCKPILED TOPSOIL SHALL BE SOWN WITH PERENNIAL RYE GRASS, 100% PURE LIVE SEED AT RATES PROVIDED BY MANUFACTURER, FERTILIZED AND MULCHED WITH STRAW, OR STOCKPILE SHALL BE COVERED WITH EROSION CONTROL FABRIC.
- LOCATION FOR STOCKPIILING OF MATERIALS AND VEHICLES SHALL BE COORDINATED WITH THE LANDSCAPE ARCHITECT PRIOR TO BEGINNING WORK. NEITHER MATERIALS, EQUIPMENT, OR VEHICLES SHALL BE STOCKPILED INSIDE OF TREE PROTECTION FENCES.
- SEDIMENT SHALL BE CONTAINED WITHIN THE CONSTRUCTION SITE, AWAY FROM DRAINAGE STRUCTURES AND WETLAND AREAS. PROVIDE DUST CONTROL FOR ALL EXCAVATION AND CONSTRUCTION OPERATIONS BY WATERING. NO OTHER MEANS WILL BE ACCEPTED.
- UPON ESTABLISHMENT OF PERMANENT VEGETATION OVER DISTURBED AREAS REMOVE AND DISPOSE EROSION CONTROL MATERIALS OFF SITE.
- LEGALLY DISPOSE OF DEMOLISHED MATERIALS INCLUDING VEGETATION AND STUMPS OFFSITE, UNLESS NOTED OTHERWISE.
- EXCAVATION WITHIN CLOSE PROXIMITY TO EXISTING UTILITIES AND TREES TO REMAIN SHALL BE DONE BY HAND TO PREVENT DAMAGE.
- ANY EXISTING TREES TO REMAIN ADJACENT TO OR WITHIN THE CLEARED AREA SHALL BE PROTECTED WITH A 4'-0" HIGH SNOW FENCE.
- CONTRACTOR IS RESPONSIBLE TO REPAIR DAMAGE DUE TO HIS OPERATIONS INSIDE AND OUTSIDE THE LIMITS OF WORK. THE PROPERTY LINE SHALL BE THE LIMIT OF WORK LINE UNLESS SHOWN OTHERWISE. REPORT DAMAGE AND CONSULT WITH THE LANDSCAPE ARCHITECT REGARDING REPAIR OF DAMAGE.
- MAINTAIN SAFE PEDESTRIAN AND VEHICULAR CIRCULATION ACCESS THROUGH THE SITE DURING CONSTRUCTION, BOTH WITHIN AND OUTSIDE THE LIMIT OF WORK.

GRADING NOTES

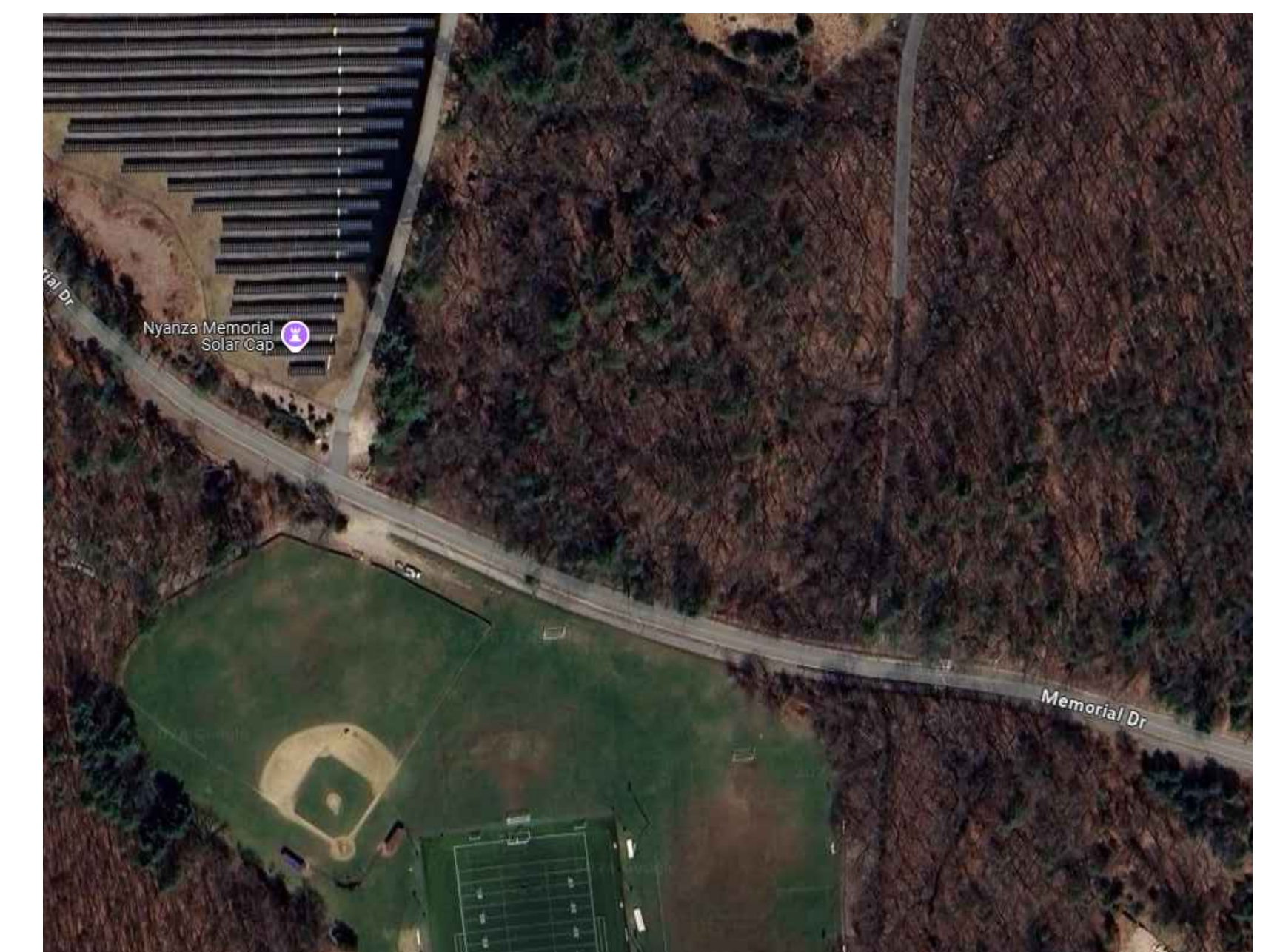
- GRADE EVENLY BETWEEN SPOT GRADES AND BETWEEN CONTOURS. SURFACES SHALL PITCH TO PROVIDE POSITIVE DRAINAGE AWAY FROM STRUCTURES.
- NOTIFY THE LANDSCAPE ARCHITECT PRIOR TO PLACING PAVEMENTS WITH A PITCH OF 5% OR GREATER
- WALKWAYS SHALL HAVE A CROSS PITCH BETWEEN 1 AND 2%.
- FINAL SHAPING OF EARTHWORK SHALL BE APPROVED IN THE FIELD BY THE LANDSCAPE ARCHITECT. CONTRACTOR SHALL STAKE PROPOSED GRADES FOR REVIEW BY LANDSCAPE ARCHITECT PRIOR TO START OF WORK.
- EXCAVATION WITHIN CLOSE PROXIMITY TO UNDERGROUND UTILITIES SHALL BE DONE BY HAND.
- PROPOSED GRADES INDICATE INTENT. VERIFY ELEVATIONS AND ADJUST TO MEET FIELD CONDITIONS AND PROVIDE POSITIVE DRAINAGE.
- CONTRACTOR SHALL ADJUST UTILITY ELEMENTS MEANT TO BE FLUSH WITH GRADE THAT ARE AFFECTED BY SITE WORK OR GRADE CHANGES, WHETHER SPECIFICALLY NOTED ON PLANS OR NOT.
- ALL PEDESTRIAN WALKWAYS AND HANDICAPPED PARKING SPACES AND AISLES TO HAVE 2% MAX. CROSSLOPE, AND 5% MAX. LONGITUDINAL SLOPE. ALL PEDESTRIAN PLAZAS, INCLUDING PATIOS, TERRACES, AND PORCHES TO HAVE A MAXIMUM SLOPE OF 2% IN ALL DIRECTIONS. CONTRACTOR TO VERIFY ALL PAVEMENT PITCHES PRIOR TO CONCRETE POURS AND WILL REPORT ANY DEFICIENCIES OR DEVIATIONS FROM THIS STANDARD TO THE ARCHITECT.

LAYOUT AND MATERIAL NOTES

- ALL DIMENSIONS ARE TAKEN TO FACE OF CURB, EXCEPT WHERE OTHERWISE NOTED.
- SCREENED IMAGES SHOW EXISTING CONDITIONS. WHERE EXISTING CONDITIONS LIE UNDER OR ARE IMPINGED UPON BY PROPOSED BUILDINGS AND/OR SITE ELEMENTS, THE EXISTING CONDITION WILL BE REMOVED, ABANDONED AND/OR CAPPED OR DEMOLISHED AS REQUIRED.

PLANTING NOTES

- FURNISH AND INSTALL PLANTS AS SHOWN. CONTRACTOR SHALL BE RESPONSIBLE FOR QUANTITY OF SHRUBS GRAPHICALLY SHOWN ON PLANS. IF THERE IS A DISCREPANCY BETWEEN PLANT LIST QUANTITIES AND GRAPHICS, THE GRAPHIC SHALL TAKE PRECEDENCE.
- PRIOR TO THE START OF EXCAVATION FOR THE PROJECT BOTH ON AND OFF THE SITE, THE CONTRACTOR SHALL NOTIFY DIGSAFE AND BE PROVIDED A DIGSAFE NUMBER INDICATING THAT EXISTING UTILITIES HAVE BEEN LOCATED AND MARKED.
- CONTRACTOR SHALL BEGIN 90 DAY MAINTENANCE PERIOD IMMEDIATELY UPON PLANTING AND WILL CONTINUE UNTIL FINAL ACCEPTANCE.
- CONTRACTOR SHALL VERIFY TREE REMOVALS WITH LANDSCAPE ARCHITECT PRIOR TO CONSTRUCTION START.
- CONTRACTOR SHALL MAINTAIN POSITIVE DRAINAGE AWAY FROM BUILDING FOUNDATIONS, STRUCTURES, AND PLANTING BEDS.
- MAXIMUM SLOPE WITHIN DISTURBED AREAS SHALL NOT EXCEED 3:1, UNLESS OTHERWISE NOTED.
- PLANTS SHALL BEAR THE SAME RELATIONSHIP TO FINISH GRADE AS TO ORIGINAL GRADES BEFORE DIGGING.
- PLANT MATERIALS SHALL CONFORM TO THE GUIDELINES ESTABLISHED BY "THE AMERICAN STANDARD FOR NURSERY STOCK", PUBLISHED BY THE AMERICAN ASSOCIATION OF NURSERYMEN.
- PLANTS TO BE BALLED IN BURLAP OR CONTAINERIZED.
- MULCH FOR PLANTED AREAS TO BE AGED PINE BARK; PARTIALLY DECOMPOSED, DARK BROWN IN COLOR AND FREE OF WOOD CHIPS THICKER THAN 1/4 INCH.
- PLANTING SOIL MIX: LOAM THOROUGHLY INCORPORATED WITH ROTTED MANURE PROPORTIONED 5 C.Y. TO 1 C.Y. OR EQUIVALENT. USE OF PEAT MOSS IS PROHIBITED.
- THE LANDSCAPE CONTRACTOR SHALL GUARANTEE PLANT MATERIALS FOR ONE (1) FULL YEAR FROM DATE OF ACCEPTANCE. REQUEST THE LANDSCAPE ARCHITECT PROVIDE A WRITTEN LETTER OF ACCEPTANCE UPON COMPLETION OF EACH PHASE.
- PLANT MATERIALS ARE SUBJECT TO THE APPROVAL OF THE LANDSCAPE ARCHITECT, AT THE NURSERY, AND AT THE SITE.
- AREAS OF THE SITE WHICH HAVE BEEN DISTURBED AND NOT OTHERWISE DEVELOPED SHALL BE LOADED WITH TOPSOIL TO A MINIMUM DEPTH OF 6", AND SEEDED WITH A MIX CONSISTING OF 40% PERENNIAL RYE GRASS; 30% CHEWINGS FESCUE; 30% KENTUCKY BLUEGRASS.
- SCREENED IMAGES SHOW EXISTING CONDITIONS. WHERE EXISTING CONDITIONS LIE UNDER OR ARE IMPINGED UPON BY PROPOSED BUILDINGS AND/OR SITE ELEMENTS, THE EXISTING CONDITION WILL BE REMOVED, ABANDONED AND/OR CAPPED OR DEMOLISHED AS REQUIRED.
- NO PLANTING SHALL BE INSTALLED BEFORE ACCEPTANCE OF ROUGH GRADING.
- PLANTS TO BE THOROUGHLY WATERED AFTER INSTALLATION, AT LEAST TWICE WITHIN THE FIRST 24 HOURS.



LOCUS PLAN
NTS

Ashland Dog Park
 Memorial Drive
 Ashland, MA

Owner
Town of Ashland
 Town Manager's Office
 101 Main Street
 Ashland, MA 01721

Landscape Architect



Radner Design Associates, Inc.

3 Allied Drive, Suite 303
 Dedham, MA 02026
 508.736.6144
www.RadnerDesign.com

Civil Engineer



www.HighpointEng.com



Revision:

Drawn: kc

Checked: mr

Scale: 1"=20'-0"

Issue:

**PLANNING BOARD
 AND
 CONSERVATION
 COMMISSION
 REVIEW**

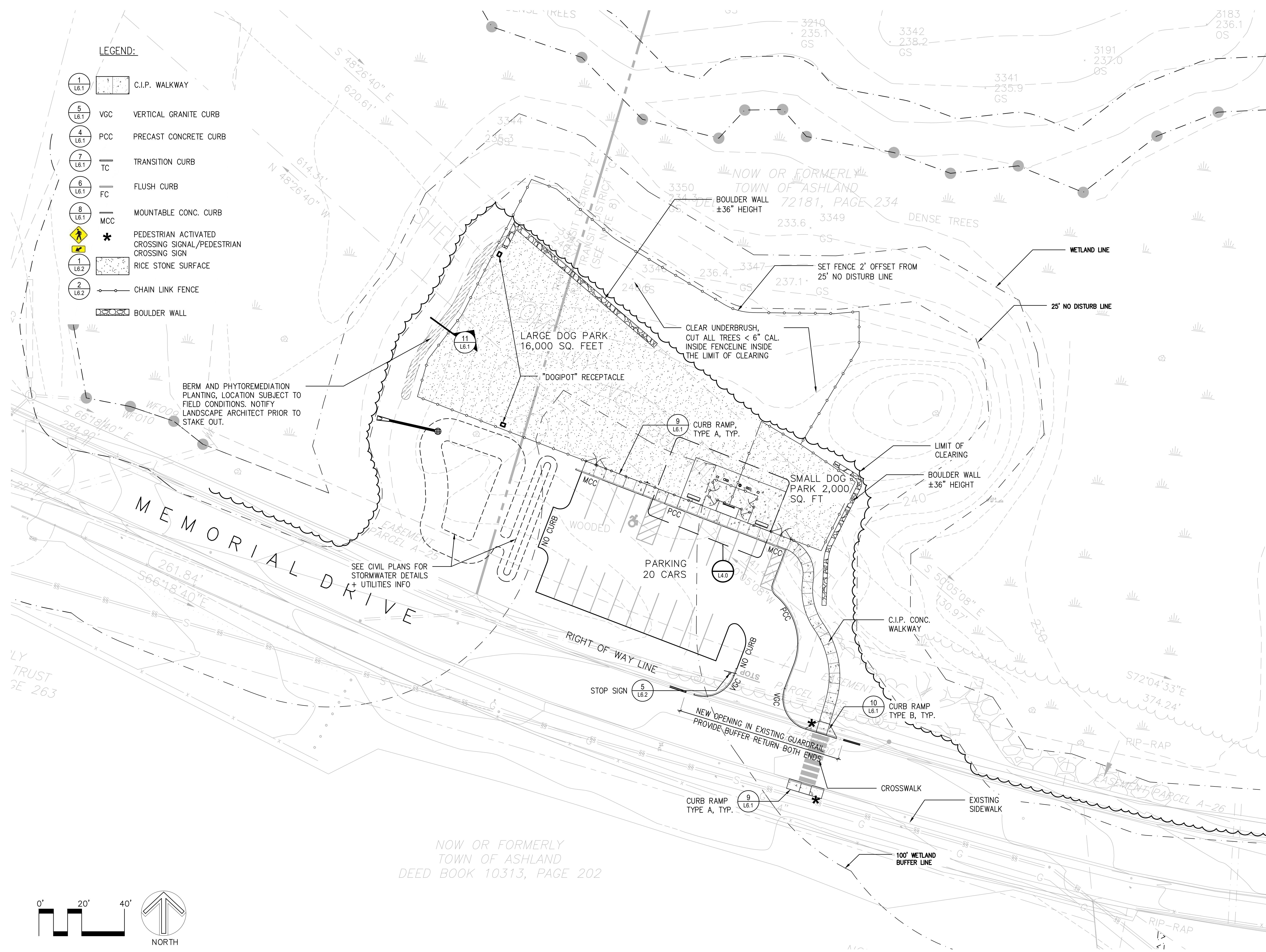
Sheet Name:
Materials Plan

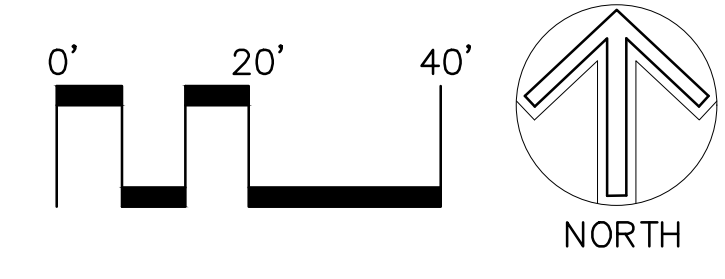
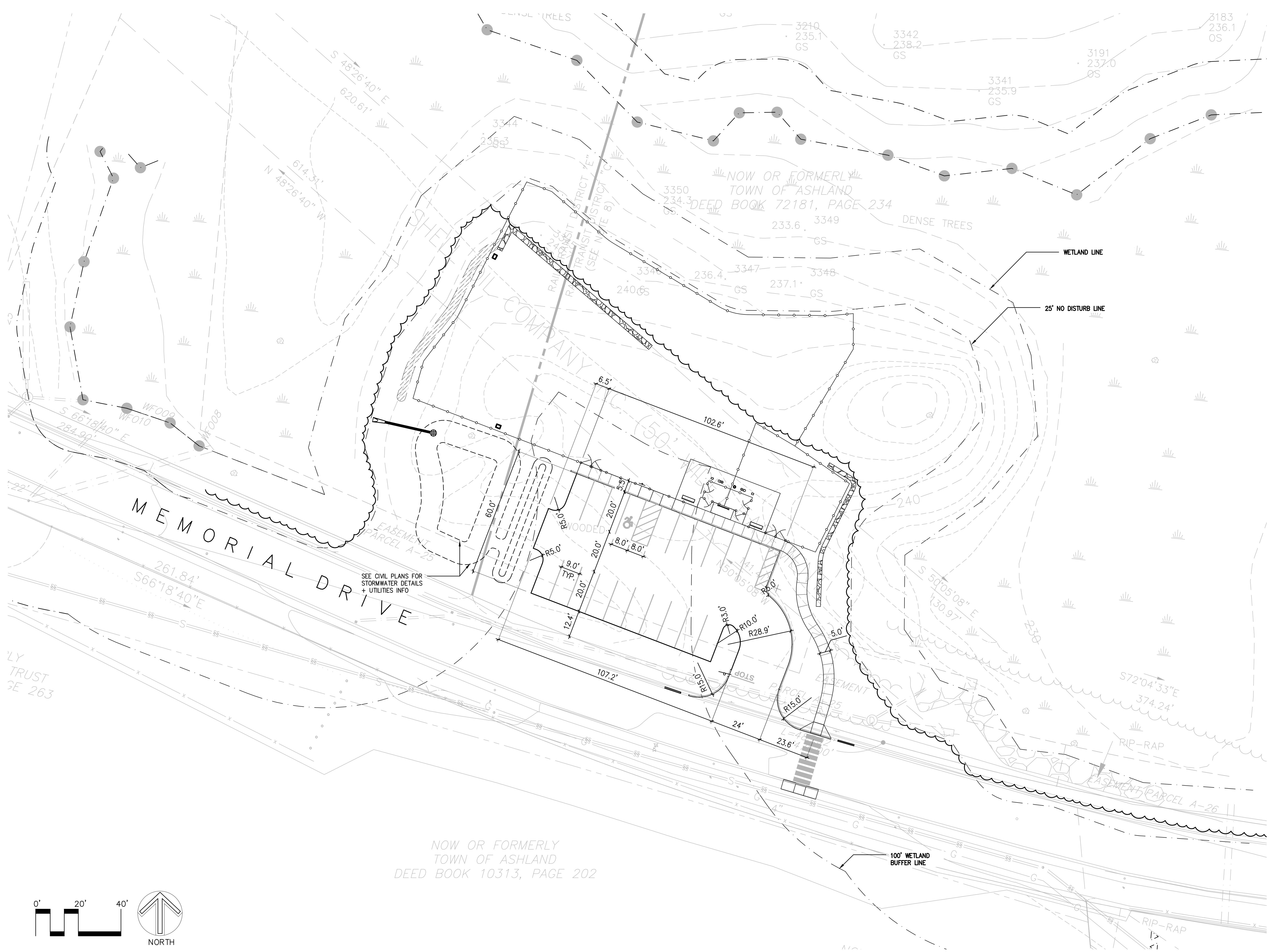
Project No.:
24-08

Issue Date:
10.01.2024

Sheet No.:
L1.0

Drawings and Designs © 2024 Radner Design Associates, Inc.





Ashland Dog Park
 Memorial Drive
 Ashland, MA

Owner
 Town of Ashland
 Town Manager's Office
 101 Main Street
 Ashland, MA 01721

Landscape Architect

Radner Design Associates, Inc.
 3 Allied Drive, Suite 303
 Dedham, MA 02026
 508.736.6144
www.RadnerDesign.com

Civil Engineer

HIGHPOINT ENGINEERING, INC.
 LAND PLANNING
 PERMIT EXPEDITING
 CIVIL ENGINEERING
 CONSULTING
 CANTON CORPORATE PLACE
 65 DANA ROAD, SUITE 400
 CANTON, MA 02021
www.HighpointEng.com



Revision:
 Drawn: kc
 Checked: mr
 Scale: 1"=20'-0"
 Issue:

**PLANNING BOARD
 AND
 CONSERVATION
 COMMISSION
 REVIEW**

Sheet Name:
 Layout Plan

Project No.:
 24-08

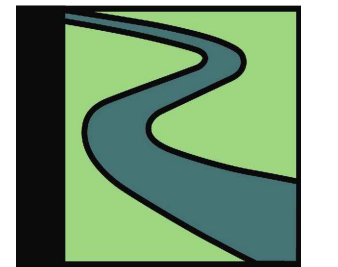
Issue Date:
 10.01.2024

Sheet No.:
L2.0

Ashland Dog Park
 Memorial Drive
 Ashland, MA

Owner
Town of Ashland
 Town Manager's Office
 101 Main Street
 Ashland, MA 01721

Landscape Architect



Radner Design Associates, Inc.
 3 Allied Drive, Suite 303
 Dedham, MA 02026
 508.736.6144
www.RadnerDesign.com

Civil Engineer



HIGHPOINT ENGINEERING, INC.
 LAND PLANNING
 PERMIT EXPEDITING
 CIVIL ENGINEERING
 CONSULTING
 CANTON CORPORATE PLACE
 45 DANA ROAD, SUITE 400
 CANTON, MA 02021
www.HighpointEng.com



Revision:

Drawn: kc

Checked: mr

Scale: 1"=20'-0"

Issue:

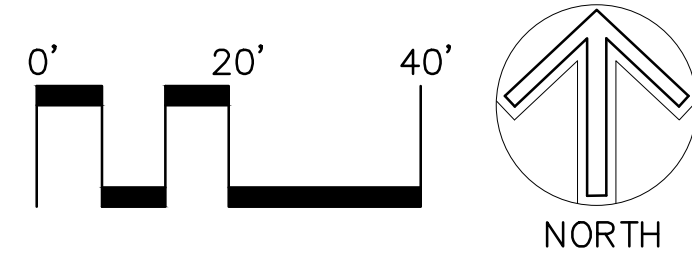
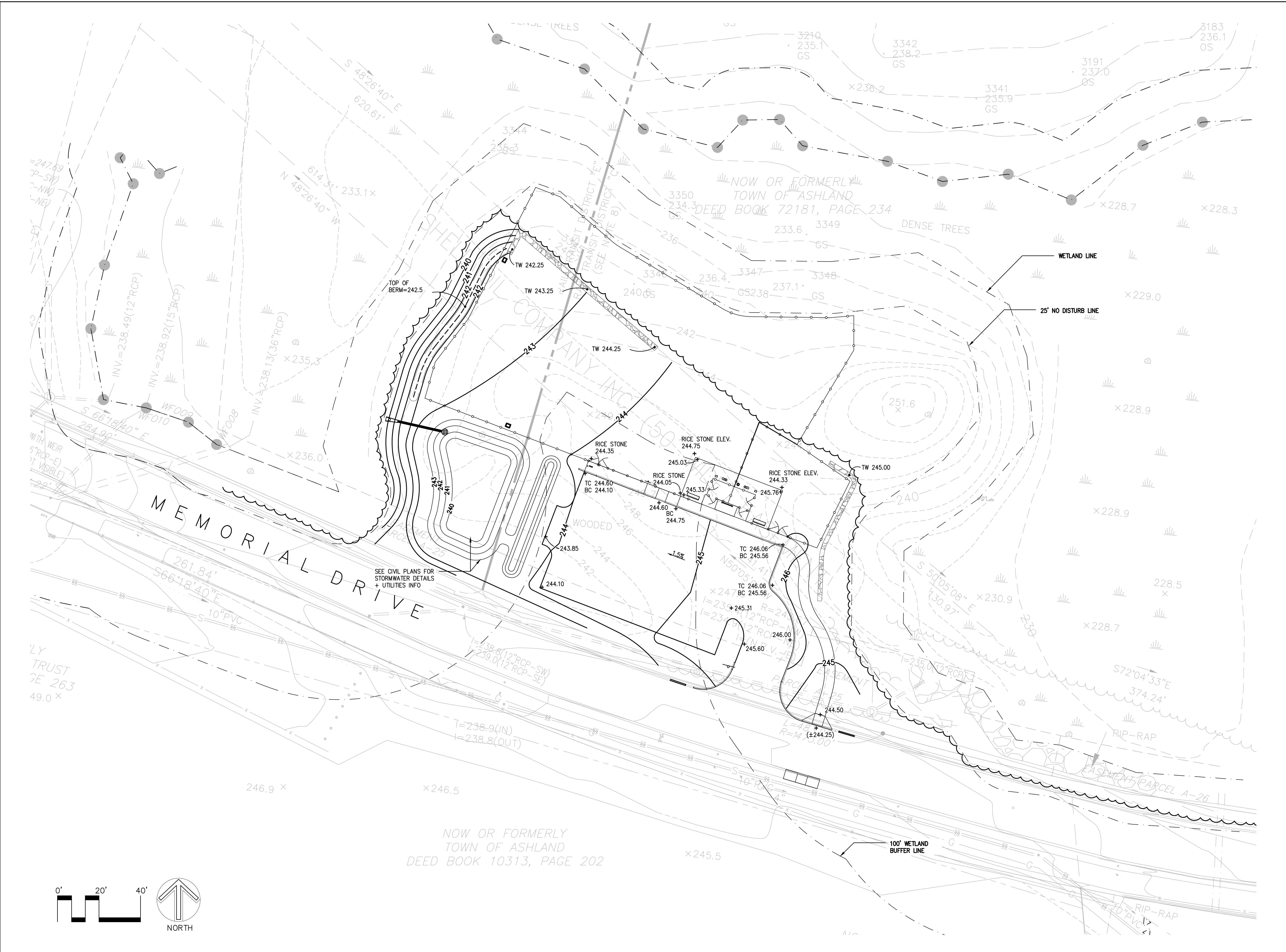
**PLANNING BOARD
 AND
 CONSERVATION
 COMMISSION
 REVIEW**

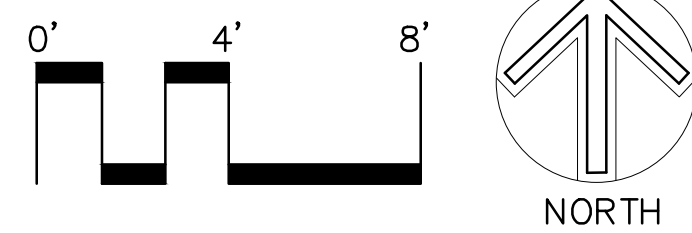
Sheet Name:
 Grading Plan

Project No.:
 24-08

Issue Date:
 10.01.2024

Sheet No.:
L3.0

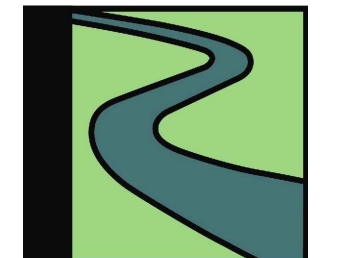




Ashland Dog Park
 Memorial Drive
 Ashland, MA

Owner
Town of Ashland
 Town Manager's Office
 101 Main Street
 Ashland, MA 01721

Landscape Architect



Radner Design Associates, Inc.
 3 Allied Drive, Suite 303
 Dedham, MA 02026
 508.736.6144
 www.RadnerDesign.com

Civil Engineer



HIGHPOINT ENGINEERING, INC.
 LAND PLANNING
 PERMIT EXPEDITING
 CIVIL ENGINEERING
 CONSULTING
 CANTON CORPORATE PLACE
 45 DANA ROAD, SUITE 401
 CANTON, MA 02021
 www.HighpointEng.com



Revision:

Drawn: kc

Checked: mr

Scale: 1/4"=1'-0"

Issue:

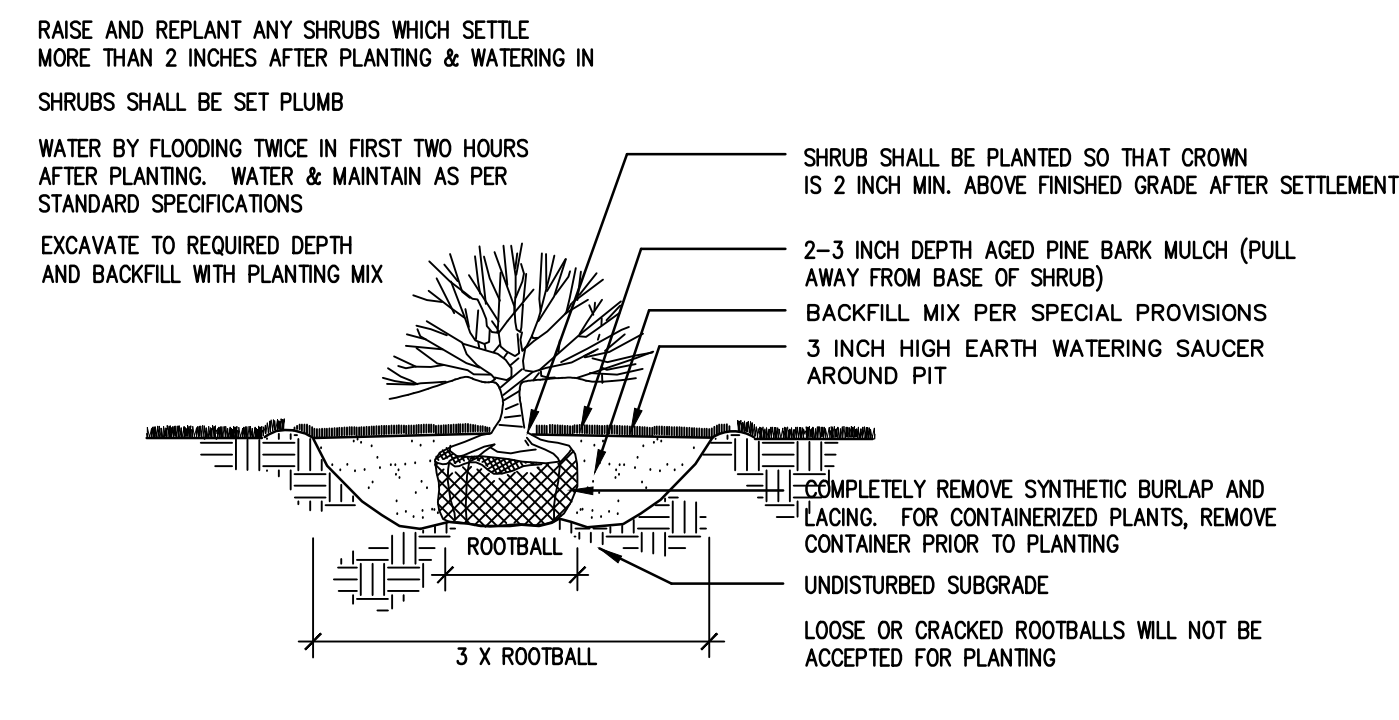
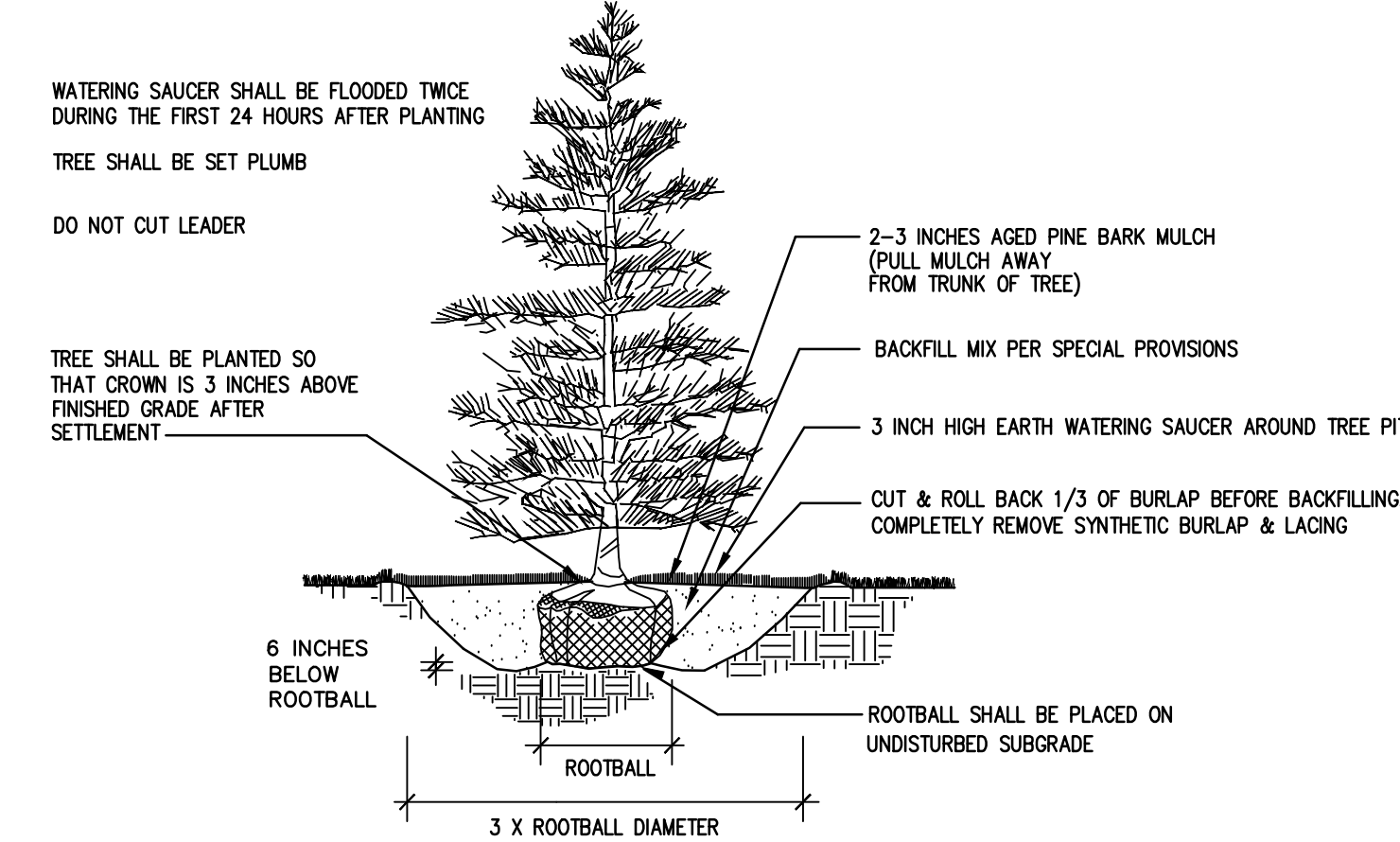
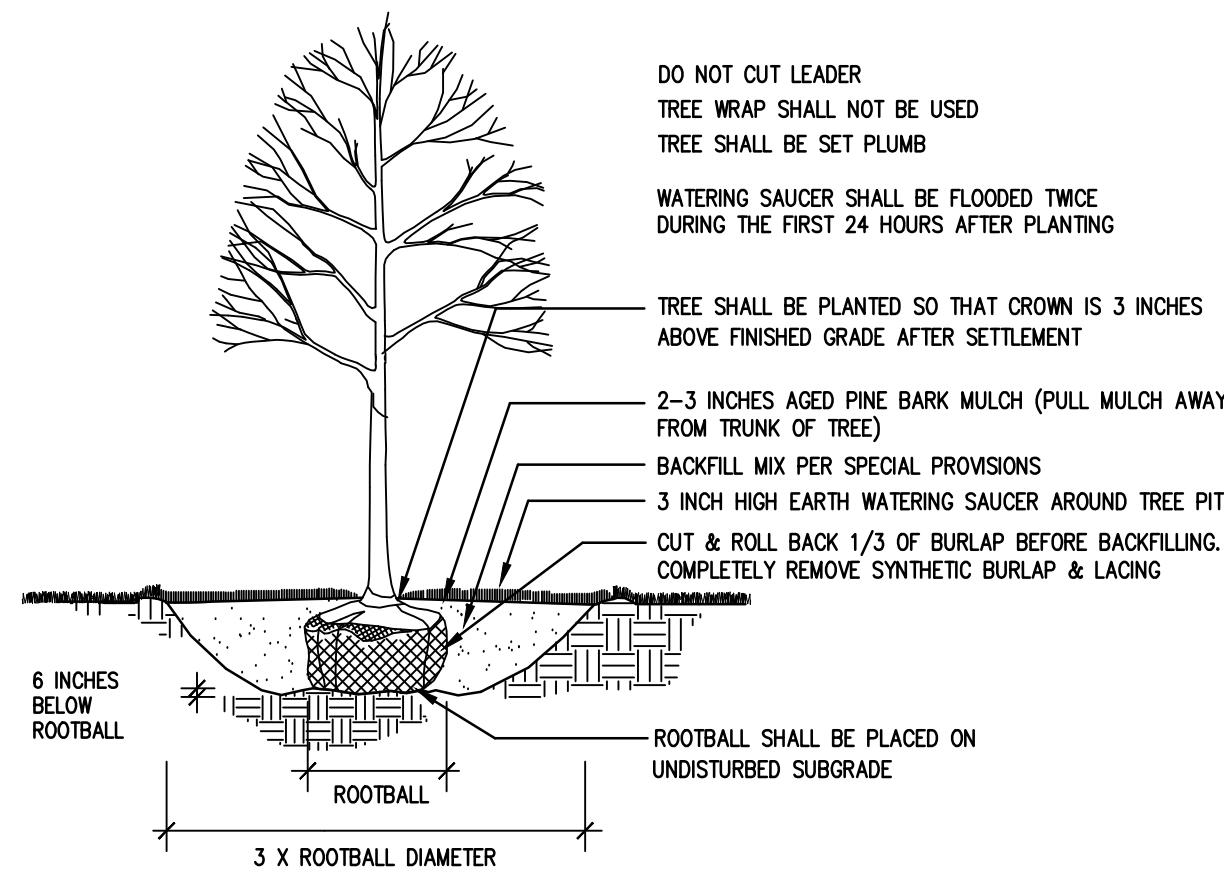
**PLANNING BOARD
 AND
 CONSERVATION
 COMMISSION
 REVIEW**

Sheet Name:
 Enlargement plan

Project No.:
 24-08

Issue Date:
 10.01.2024

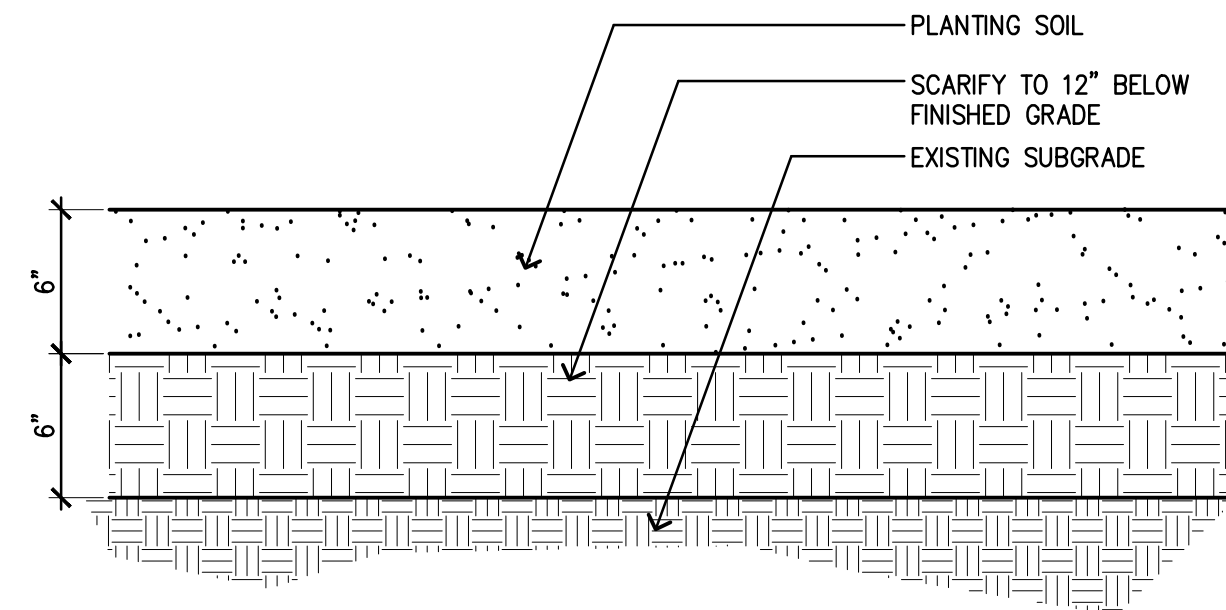
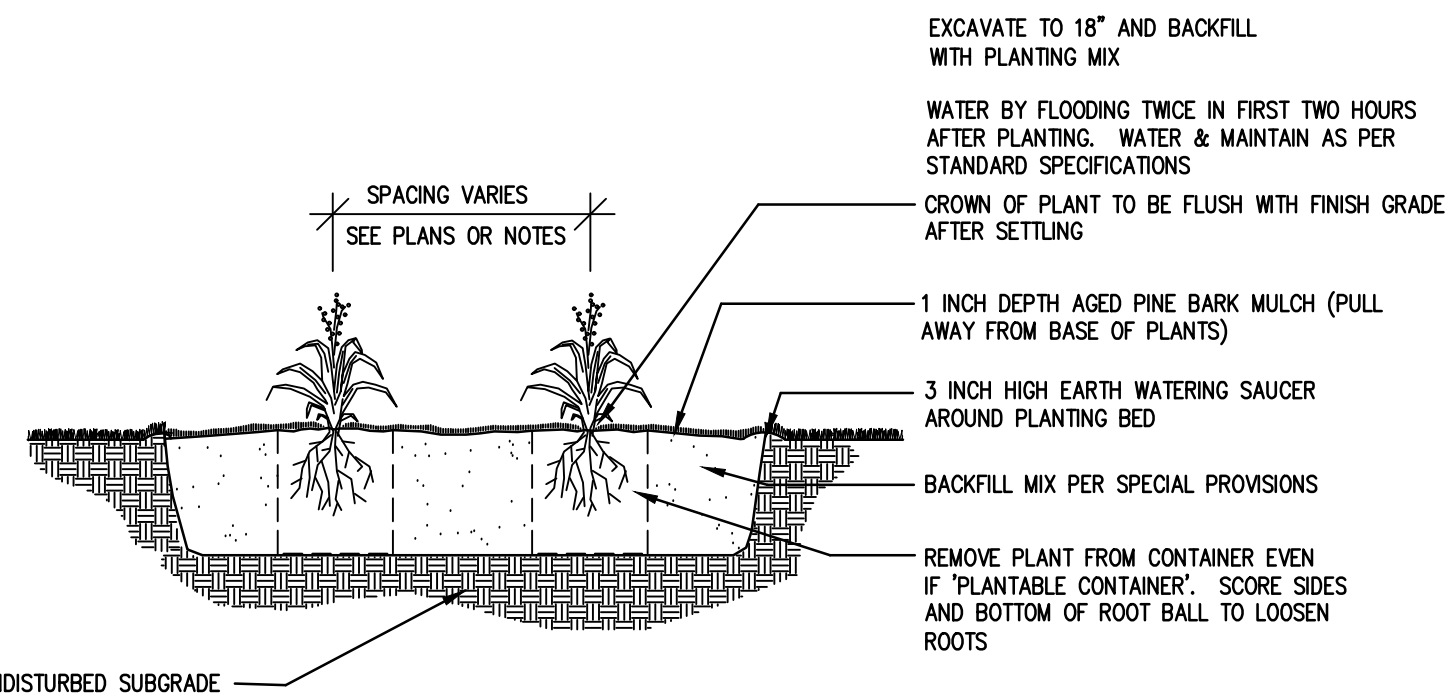
Sheet No.:
L4.0



1 DECIDUOUS TREE PLANTING
L5.0 SCALE: NTS

2 CONIFEROUS TREE PLANTING
L5.0 SCALE: NTS

3 SHRUB PLANTING
L5.0 SCALE: NTS



4 PERENNIAL PLANTING
L5.0 SCALE: NTS

5 LOAM AND SEED
L5.0 SCALE: NTS

Qty.	Common Name	Latin Name	Scheduled Size	Spacing	Remarks
Deciduous Trees					
3	American Hophornbeam	<i>Ostrya virginiana</i>	2.5-3" Cal.	30' O.C.	B&B, Full, Symmetrical
Coniferous Trees					
5	White Pine	<i>Pinus strobus</i>	6-8'	15' O.C.	B&B, Full, Symmetrical
Shrubs					
13	Inkberry Holly	<i>Ilex glabra</i>	5 Gal.	4' O.C.	Container
6	Grey Owl Juniper	<i>Juniperus virginiana</i> 'Grey Owl'	5 Gal.	8' O.C.	Container
19	GRO-Low Sumac	<i>Rhus aromatica</i> 'Gro-Low'	5 Gal.	5' O.C.	Container
Grasses, Perennials and Groundcovers					
30	American Maidenhair Fern	<i>Adiantum pedatum</i>	1 Gal.	3' O.C.	Container
57	Christmas Fern	<i>Polystichum acrostichoides</i>	1 Gal.	3' O.C.	Container
31	Ostrich Fern	<i>Matteuccia struthiopteris</i>	1 Gal.	3' O.C.	Container
75	Virginia Mountain Mint	<i>Pycnanthemum virginianum</i>	1 Gal.	2' O.C.	Container
59	Golden Dew Tufted Hair Grass	<i>Deschampsia cespitosa</i> 'Goldtau'	2 Gal.	2' O.C.	Container
65	Indian Grass	<i>Sorghastrum nutans</i>	2 Gal.	3' O.C.	Container
66	Little Bluestem	<i>Schizachyrium scoparium</i>	2 Gal.	2' O.C.	Container



Ernst Conservation Seeds
8884 Mercer Pike
Meadville, PA 16335
(800) 873-3321 Fax (814) 336-5191
www.ernstseed.com

Date: October 02, 2024

Native Detention Area Mix - ERNMx-183

Botanical Name	Common Name	Price/Lb
26.00 % <i>Panicum clandestinum</i> , Tioga	Deertongue, Tioga	22.23
25.00 % <i>Panicum virgatum</i> , 'Shawnee'	Switchgrass, 'Shawnee'	11.74
21.00 % <i>Elymus virginicus</i>	Virginia Wildrye	8.10
20.00 % <i>Carex vulpinoidea</i> , PA Ecotype	Fox Sedge, PA Ecotype	28.80
4.00 % <i>Agrostis perennans</i> , Albany Pine Bush-NY Ecotype	Autumn Bentgrass, Albany Pine Bush-NY Ecotype	16.80
2.00 % <i>Juncus effusus</i>	Soft Rush	48.00
1.00 % <i>Juncus tenuis</i> , PA Ecotype	Path Rush, PA Ecotype	48.00
1.00 % <i>Panicum rigidulum</i> , PA Ecotype	Redtop Panicgrass, PA Ecotype	57.60

100.00 % Mix Price/Lb Bulk: \$18.87

Seeding Rate: 20 lb per acre, or 1/2 lb per 1,000 sq ft. For a cover crop: grain rye (1 Sep to 30 Apr; 30 lbs/acre), Japanese millet (1 May to 31 Aug; 10 lbs/acre).

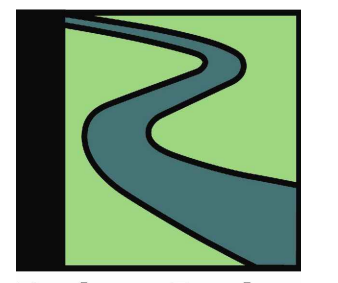
Grasses & Grass-like Species - Herbaceous Perennial; Stormwater Management

The native grasses, sedges and rushes establish quickly in areas where mowing is not anticipated. With a high seed count per pound, it can achieve native establishment with minimum risk and tolerate low-fertility. Mix formulations are subject to change without notice depending on the availability of existing and new products. While the formula may change, the guiding philosophy and function of the mix will not.

Ashland Dog Park
Memorial Drive
Ashland, MA

Owner
Town of Ashland
Town Manager's Office
101 Main Street
Ashland, MA 01721

Landscape Architect



Radner Design Associates, Inc.
3 Allied Drive, Suite 303
Dedham, MA 02026
508.736.6144
www.RadnerDesign.com

Civil Engineer



Revision:

Drawn: kc

Checked: mr

Scale:

Issue:

PLANNING BOARD AND CONSERVATION COMMISSION REVIEW

Sheet Name:
Planting Details and Schedules

Project No.:
24-08

Issue Date:
10.01.2024

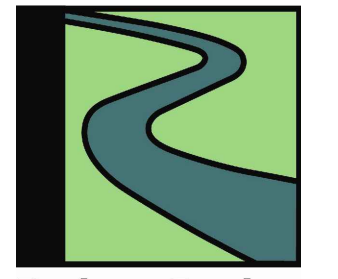
Sheet No.:

L5.0

Ashland Dog Park
 Memorial Drive
 Ashland, MA

Owner
Town of Ashland
 Town Manager's Office
 101 Main Street
 Ashland, MA 01721

Landscape Architect



Radner Design Associates, Inc.
 3 Allied Drive, Suite 303
 Dedham, MA 02026
 508.736.6144
www.RadnerDesign.com

Civil Engineer



HIGHPOINT ENGINEERING, INC.
 LAND PLANNING
 PERMIT EXPEDITING
 CIVIL ENGINEERING
 CONSULTING
 CANTON CORPORATE PLACE
 45 DANA ROAD, SUITE 400
 CANTON, MA 02021
www.HighpointEng.com



Revision:
 Drawn: kc
 Checked: mr
 Scale: 1"=20'-0"
 Issue:

**PLANNING BOARD
 AND
 CONSERVATION
 COMMISSION
 REVIEW**

Sheet Name:
Planting Plan

Project No.:
24-08

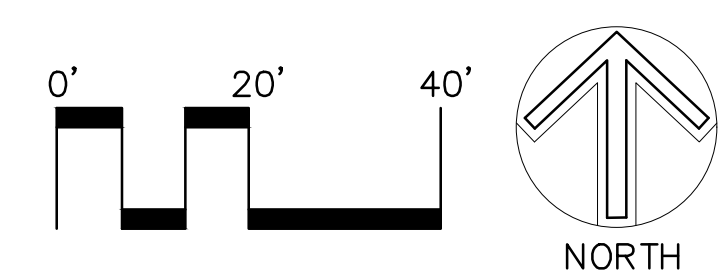
Issue Date:
10.01.2024

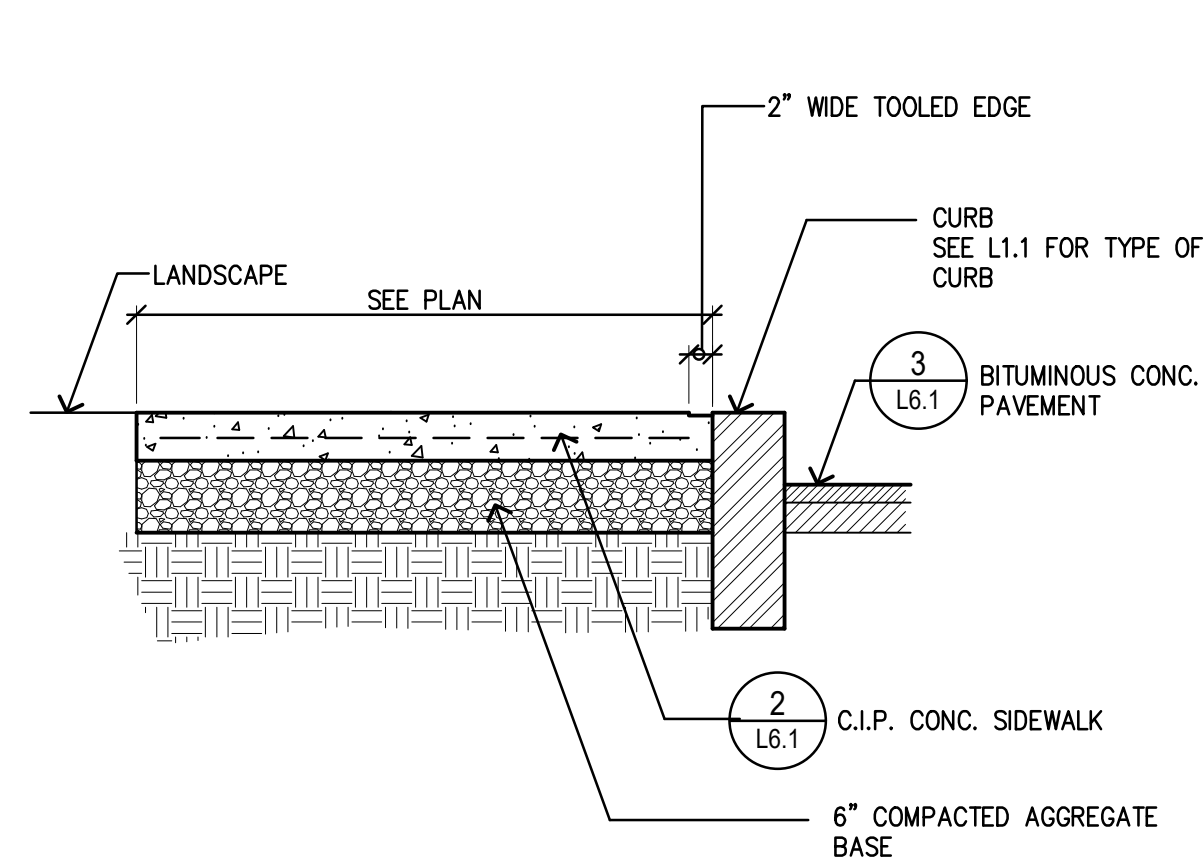
Sheet No.:
L5.1



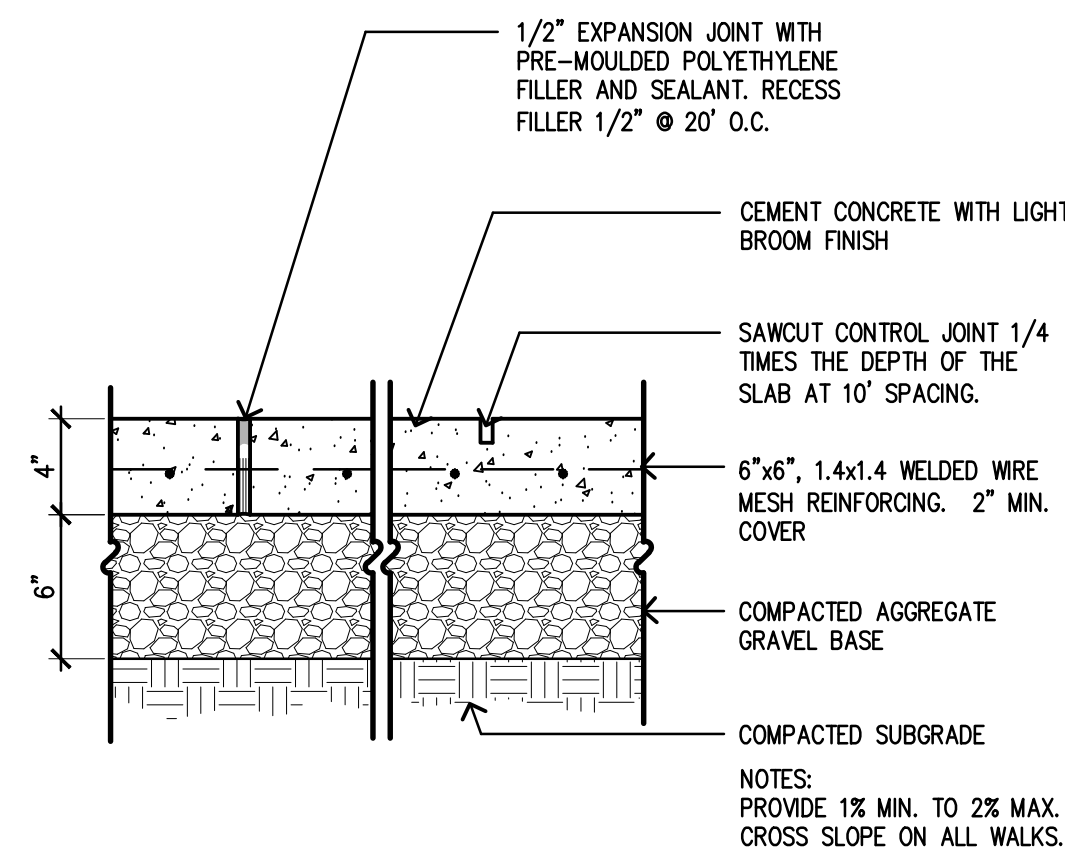
NOW OR FORMERLY
 TOWN OF ASHLAND
 DEED BOOK 10313, PAGE 202

- LEGEND:
- LOAM & SEED
 - PLANTING BED
 - NATIVE DETENTION AREA MIX - ERNMX-183 BY ERNST CONSERVATION SEEDS

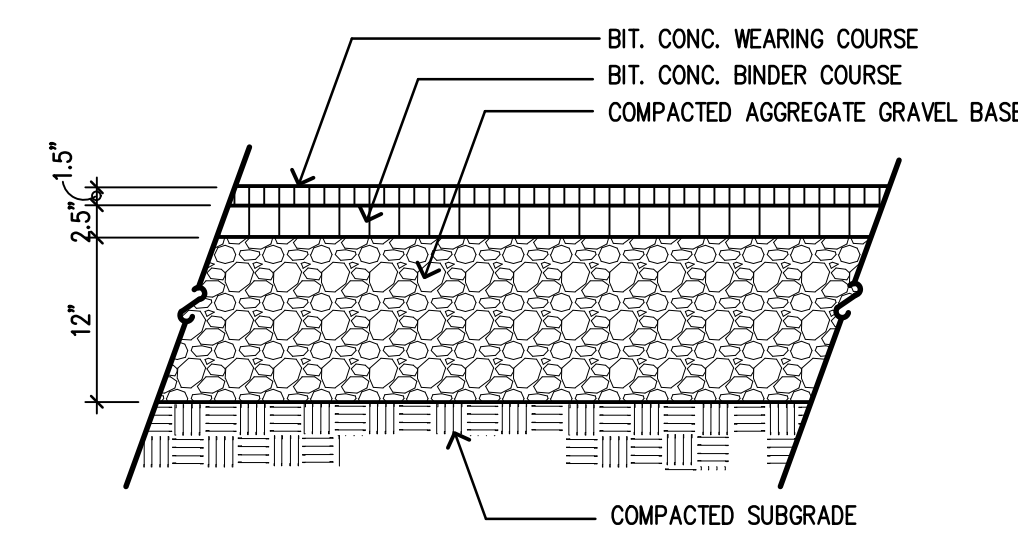




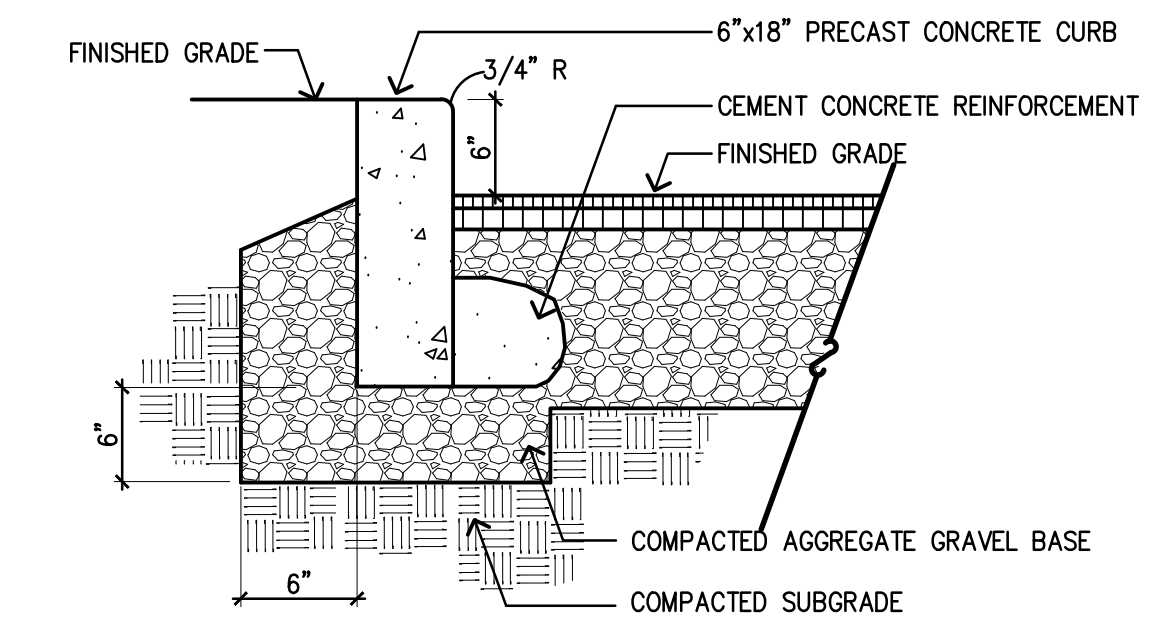
1 C.I.P. CONCRETE WALK
L6.1 SCALE: 3/4"=1'-0"



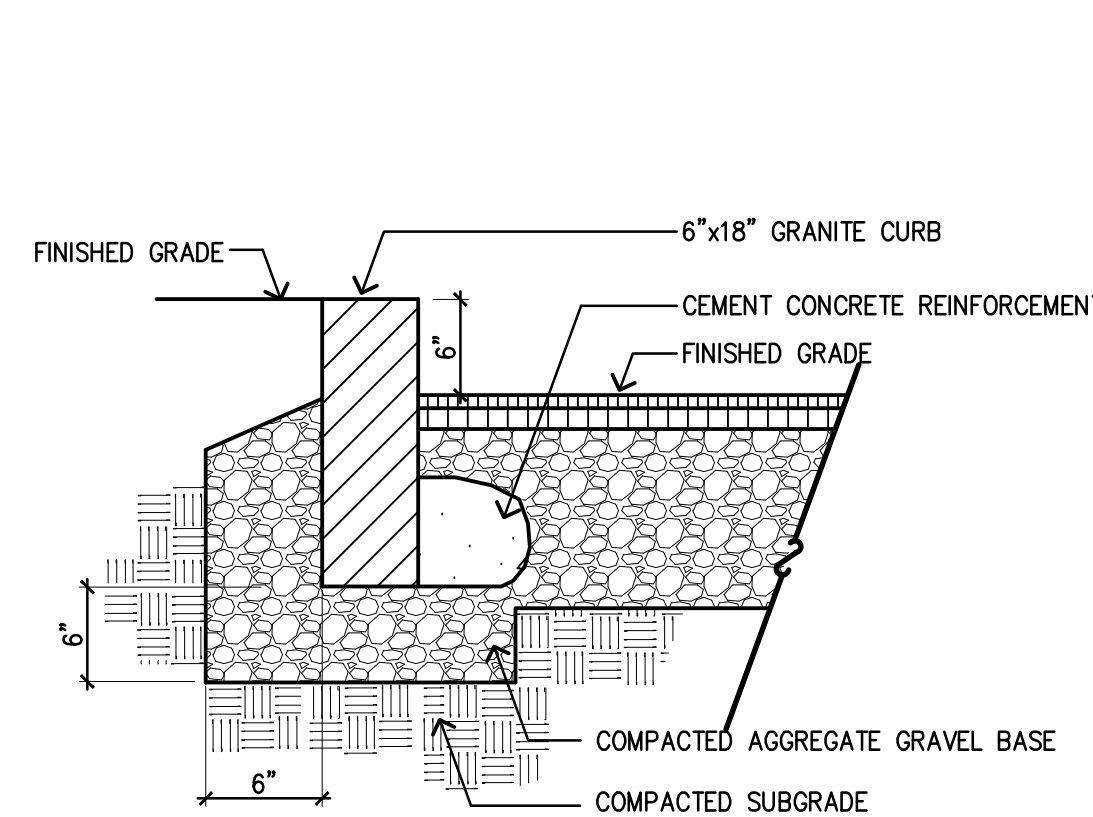
2 C.I.P. CONCRETE PAVEMENT
L6.1 SCALE: 1 1/2"=1'-0"



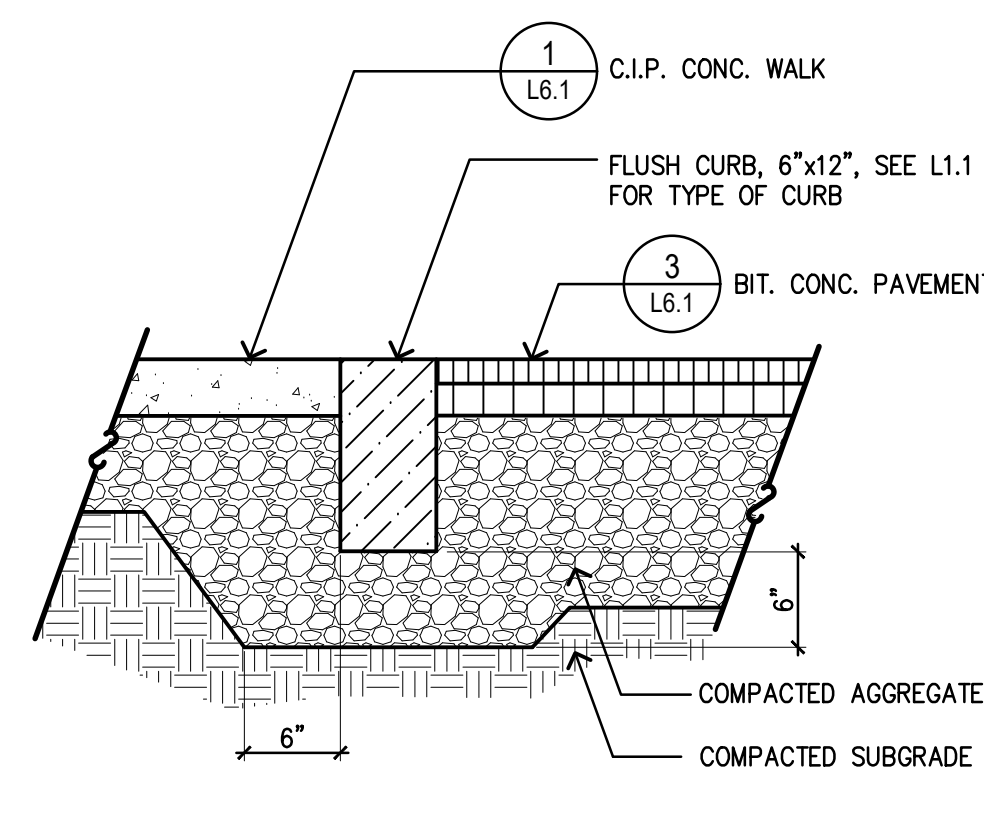
3 BITUMINOUS CONCRETE PAVEMENT
L6.1 SCALE: 1 1/2"=1'-0"



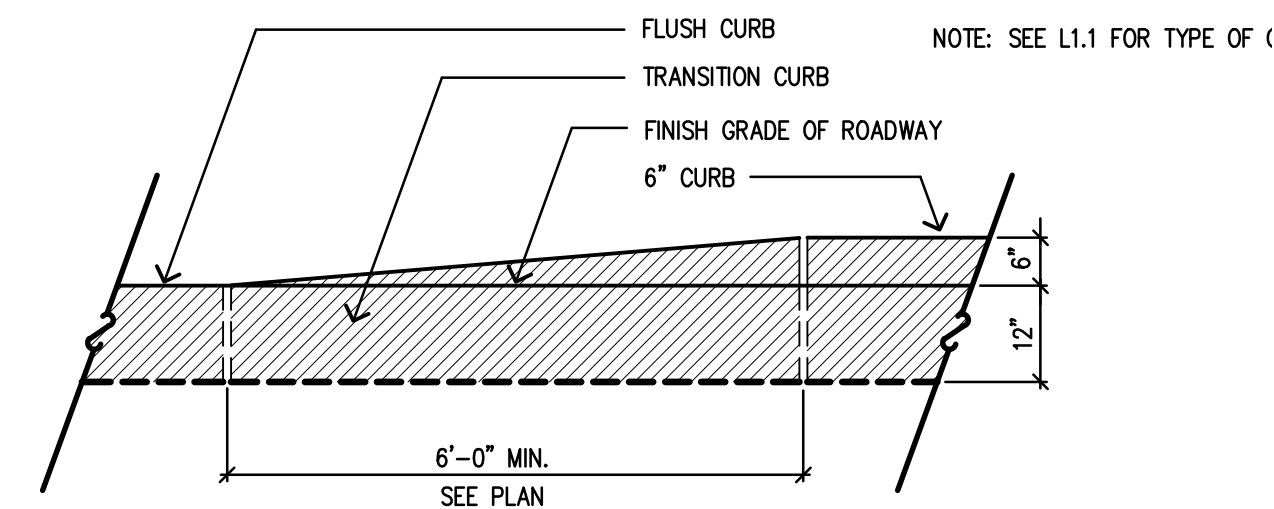
4 PRECAST CONCRETE CURB
L6.1 SCALE: 1"=1'-0"



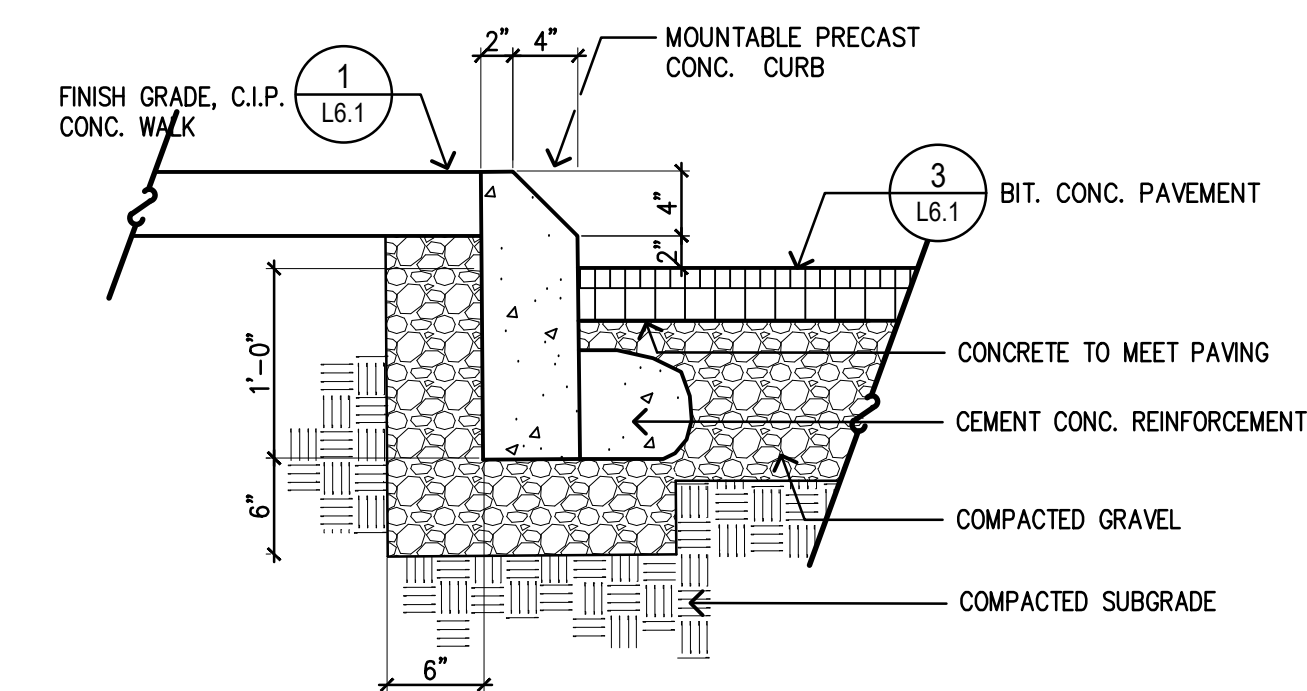
5 VERTICAL GRANITE CURB
L6.1 SCALE: 1"=1'-0"



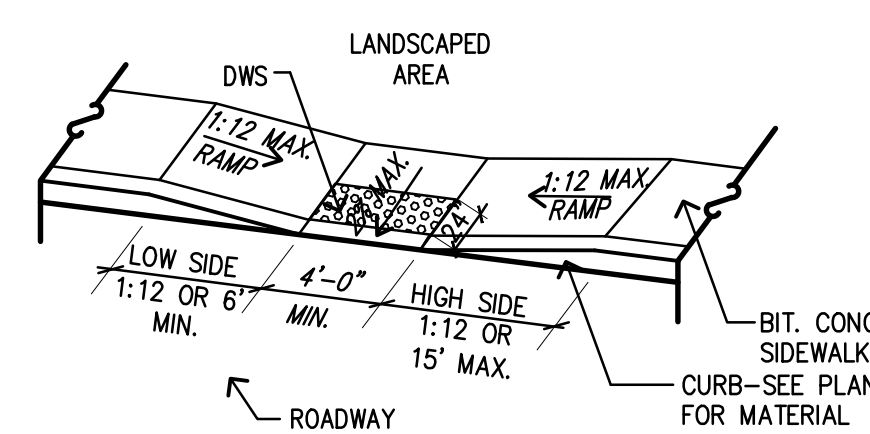
6 FLUSH CURB
L6.1 SCALE: 1"=1'-0"



7 TRANSITION CURB
L6.1 SCALE: 1/2"=1'-0"

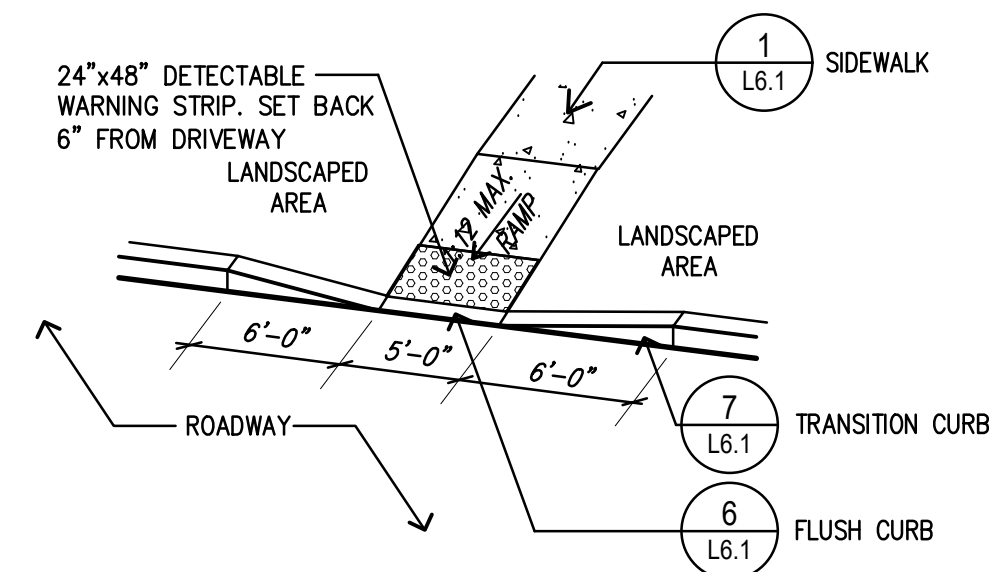


8 MOUNTABLE CURB
L6.1 SCALE: 1"=1'-0"

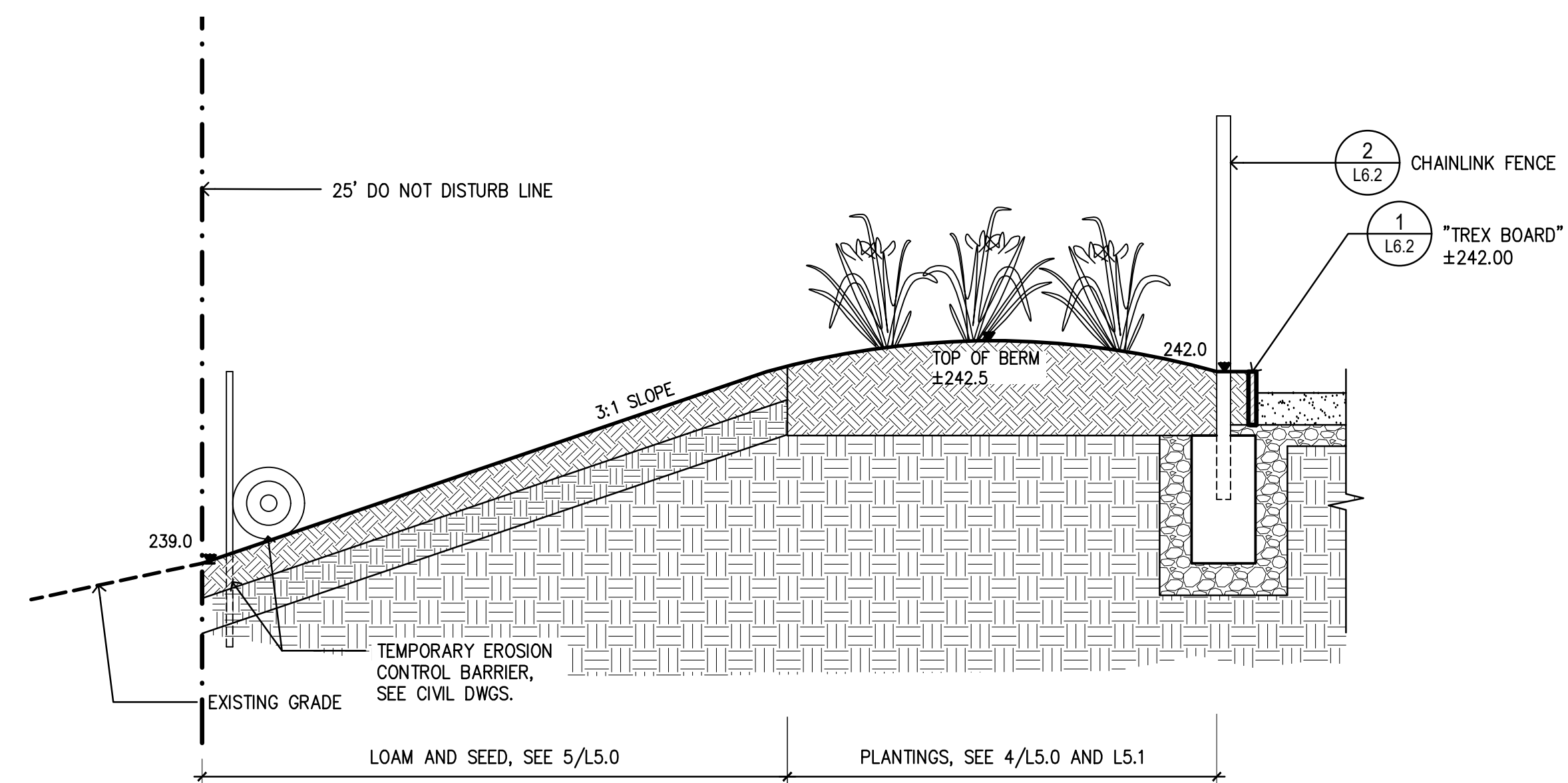


NOTES FOR HC RAMPS
1. DIMENSIONS SHOWN AT EDGE OF ROAD ARE FIXED.
2. DIMENSIONS ARE SUBJECT TO CHANGE IN FIELD. ALL SLOPES AND DIMENSIONS TO COMPLY WITH A.D.A. AND M.A.A.B. REQUIREMENTS.
3. FOR CURB MATERIAL AND PAVEMENT MATERIAL, SEE LAYOUT & MATERIALS PLAN.
4. ALL RAMPS AND LANDINGS TO BE CAST IN PLACE CONCRETE. SEE C.I.P. SIDEWALK DETAIL. PROVIDE HEAVY BROOM FINISH ON RAMP AND SIDE SLOPES PERPENDICULAR TO FLOW OF TRAFFIC.
5. ALL RAMPS AND LANDINGS TO HAVE 1.5-2.0% CROSS PITCH.
6. DETECTABLE WARNING STRIPS (DWS) TO EXTEND FULL WIDTH OF RAMP. SET 6" BACK FROM ROADWAY.

9 CURB RAMP, TYPE A
L6.1 SCALE: 1"=1'-0"



10 CURB RAMP, TYPE B
L6.1 SCALE: 1"=1'-0"



11 BIOREMEDIATION AREA - SECTION
L6.1 SCALE: 1/2"=1'-0"



Revision:

Drawn: kc

Checked: mr

Scale:

Issue:

PLANNING BOARD AND CONSERVATION COMMISSION REVIEW

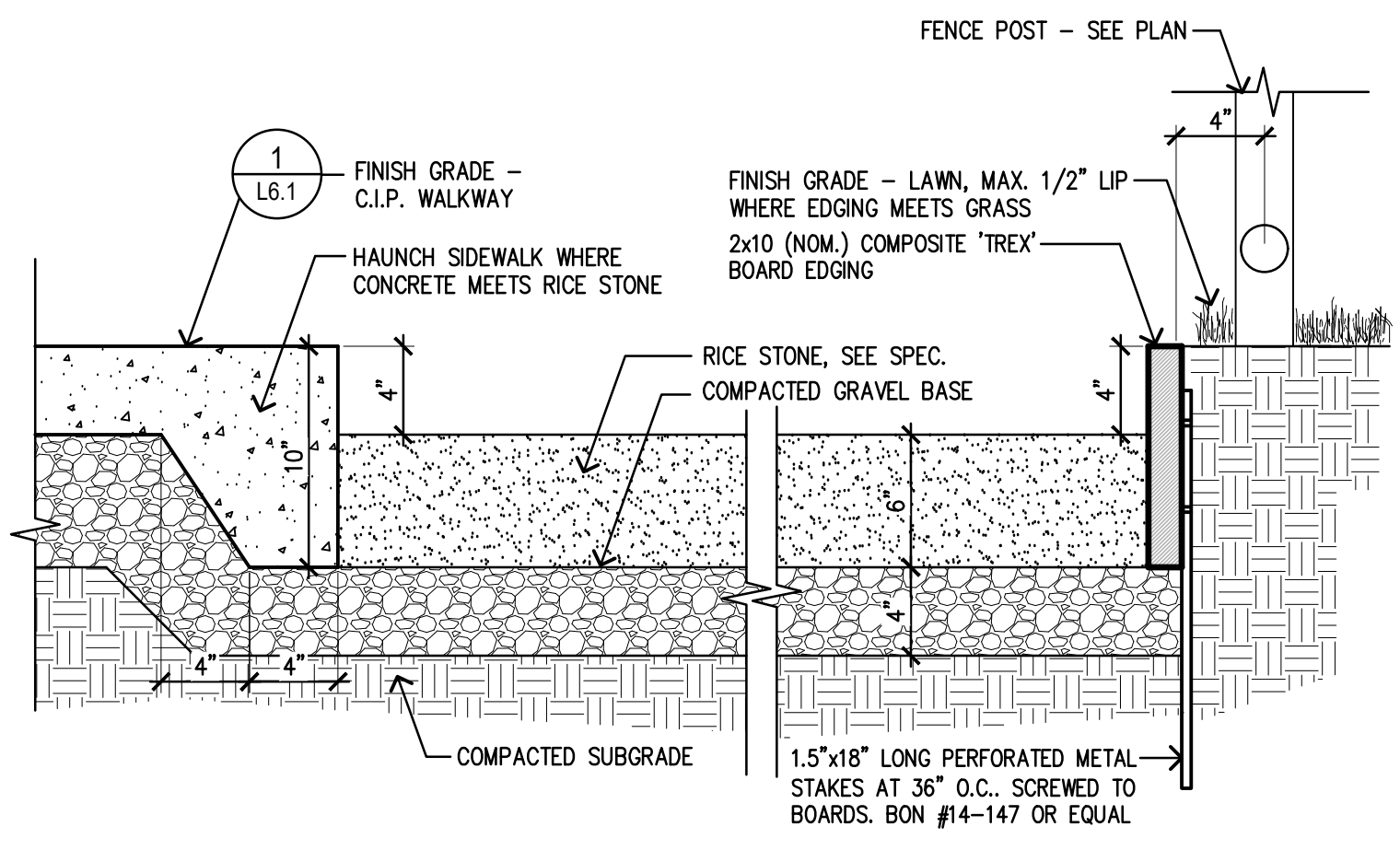
Sheet Name:
Details 1

Project No.:
24-08

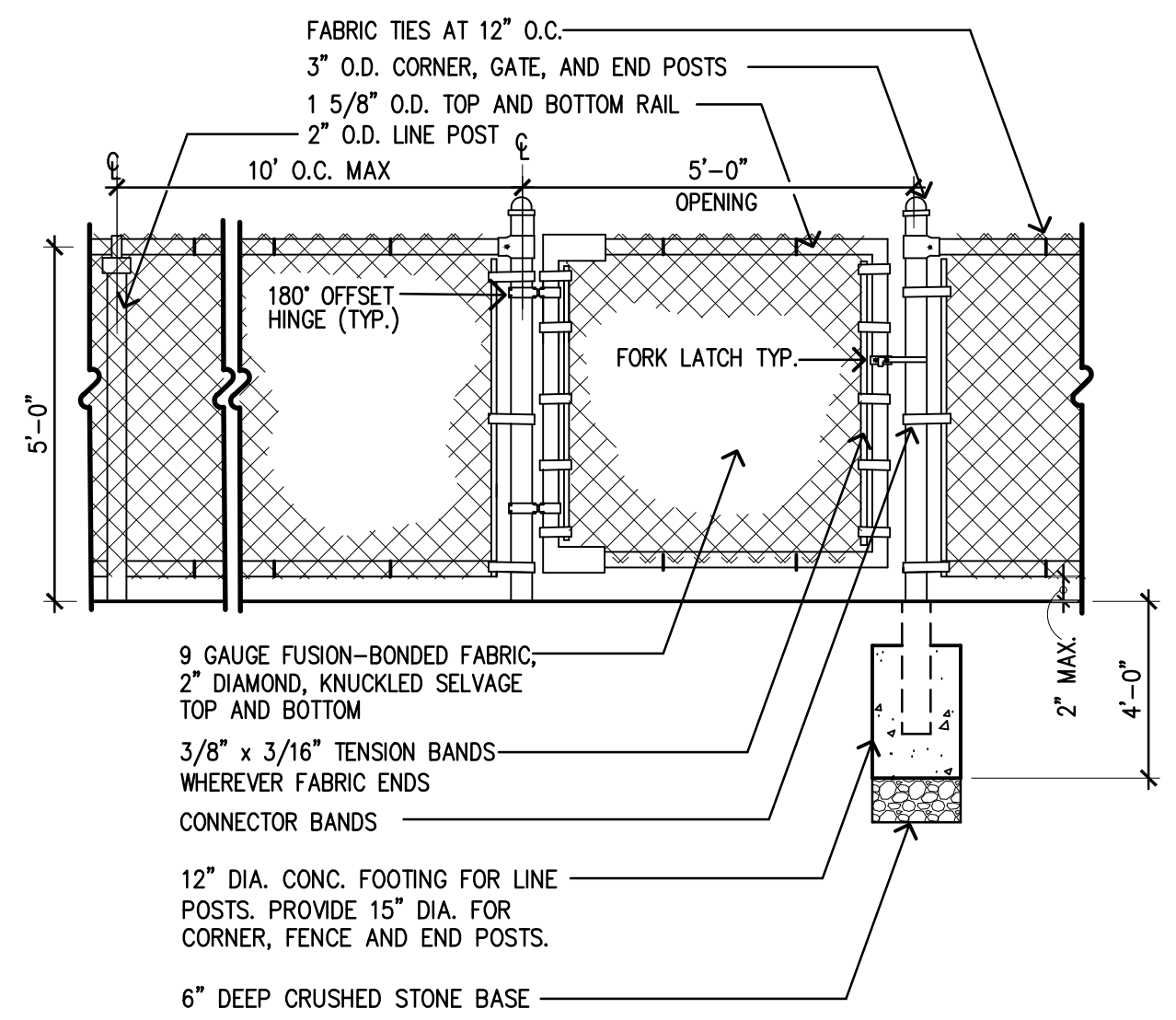
Issue Date:
10.01.2024

Sheet No.:

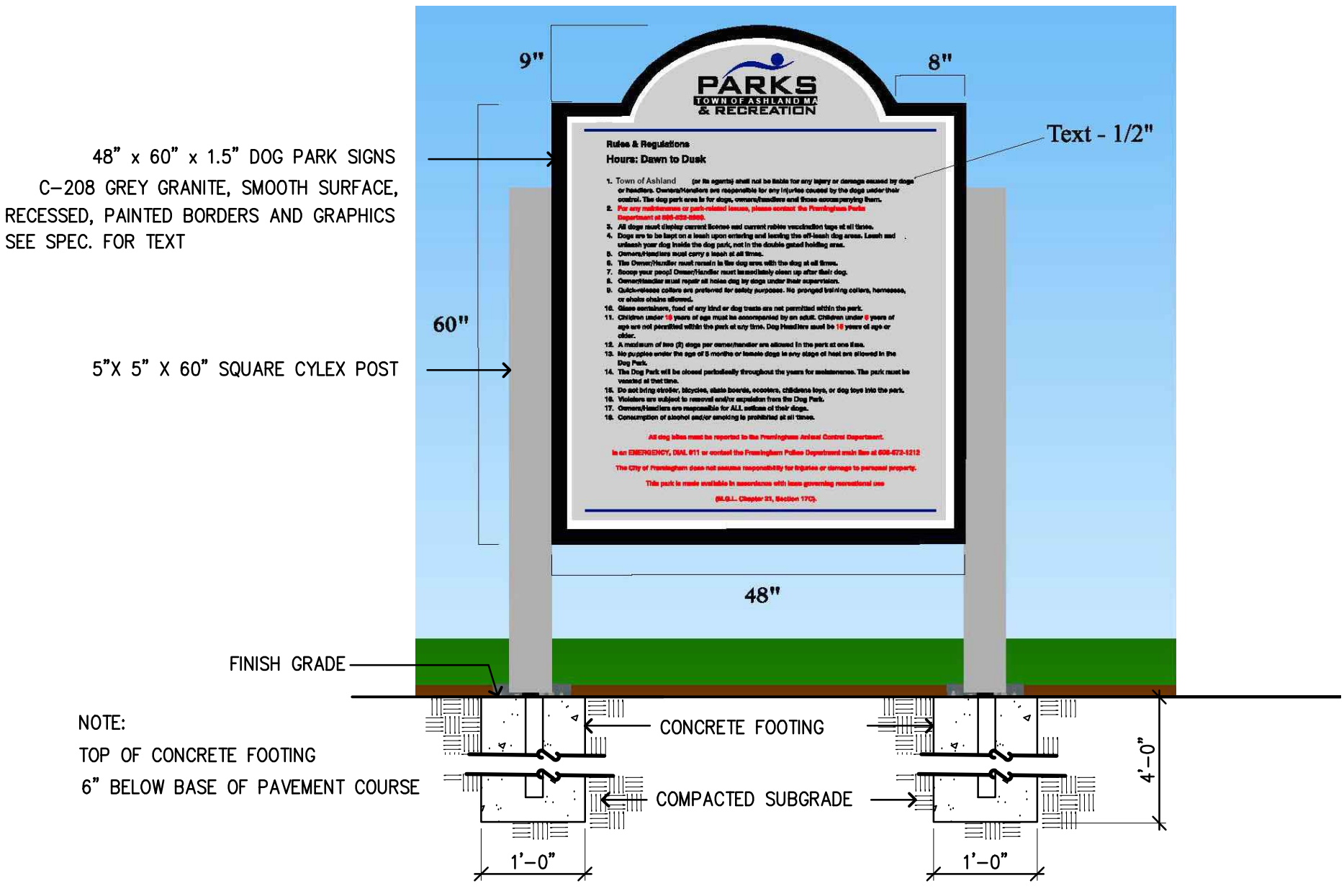
L6.1



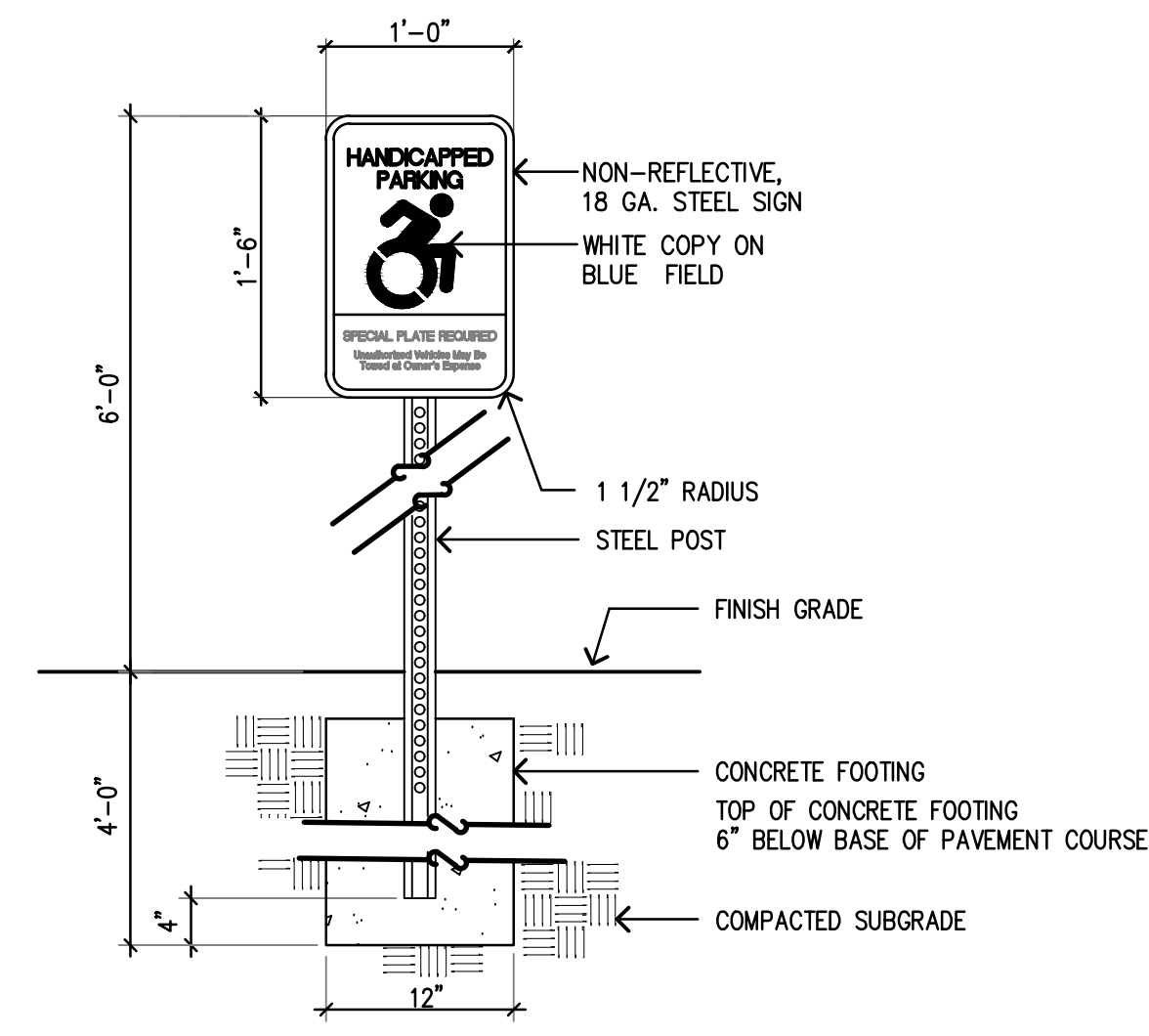
1 RICE STONE
 L6.2 SCALE: 1 1/2"=1'-0"



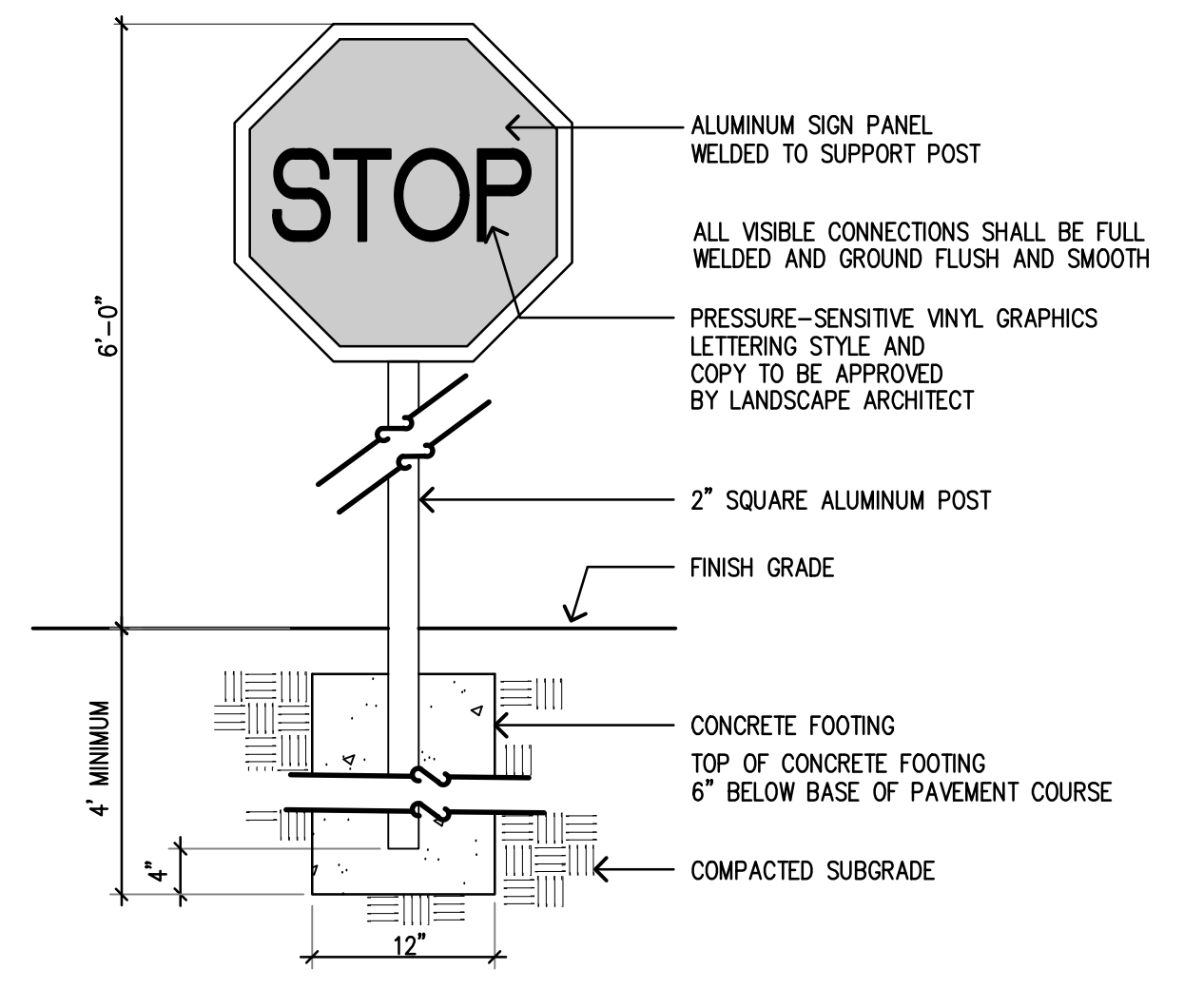
2 CHAINLINK FENCE
 L6.2 SCALE: 1/2"=1'-0"



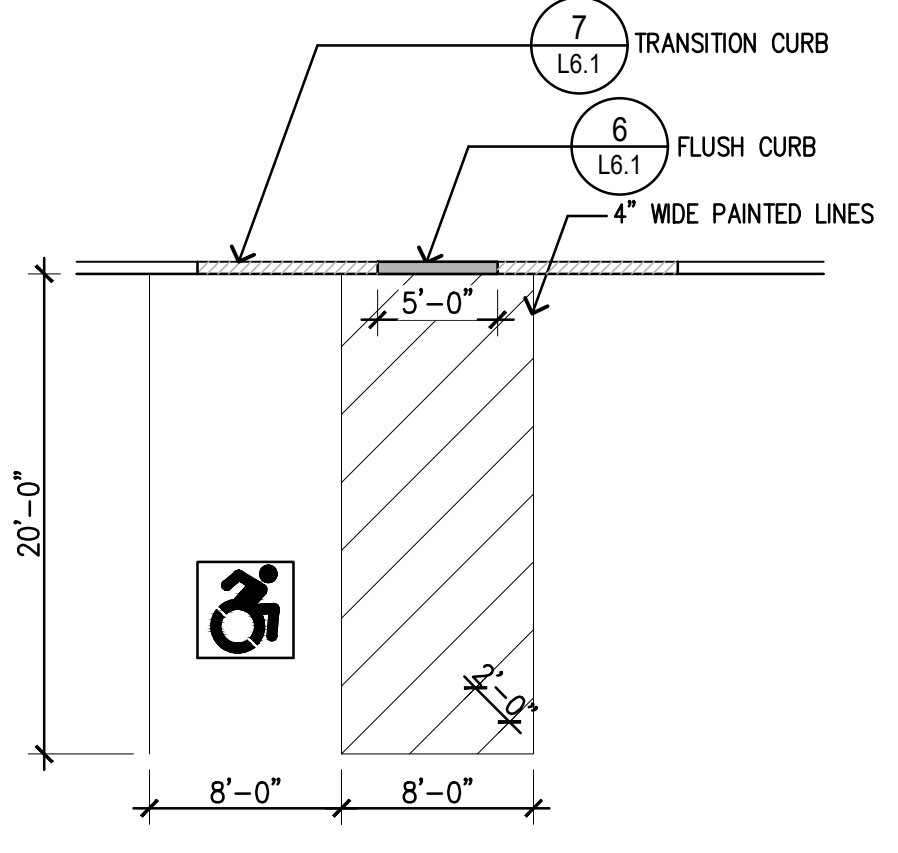
3 DOG PARK SIGN
 L6.2 SCALE: 3/4"=1'-0"



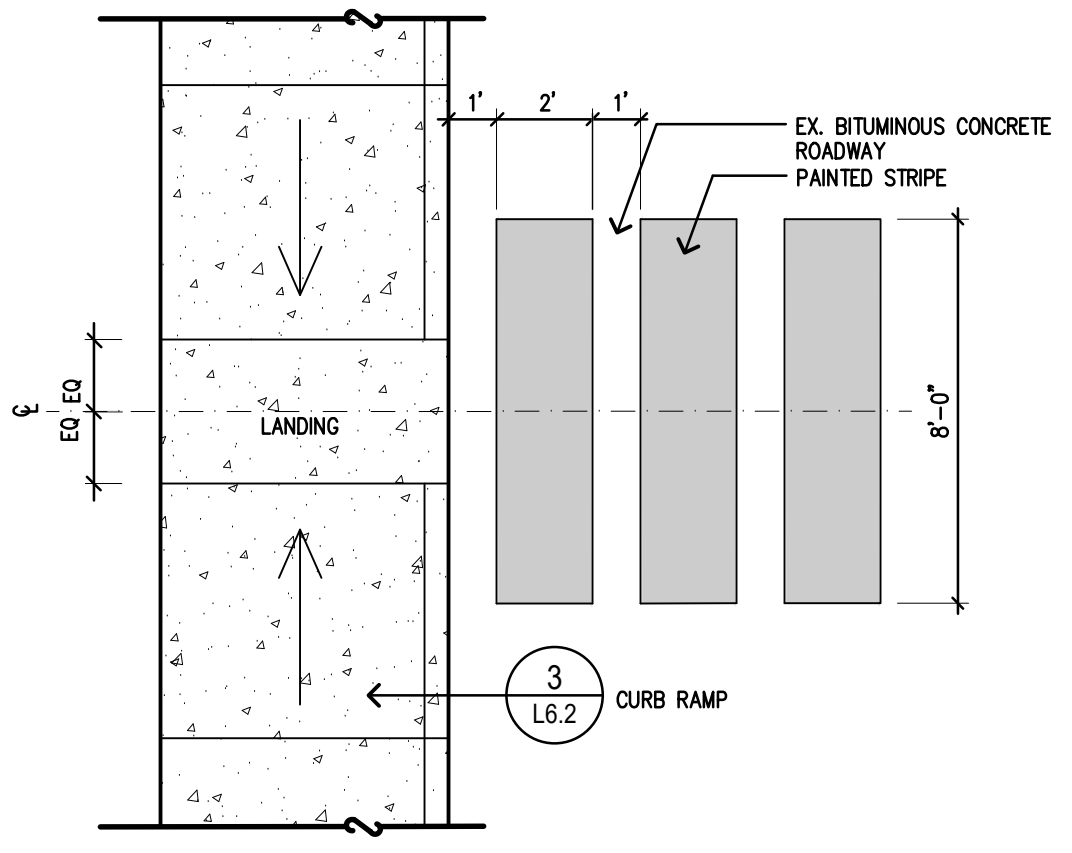
4 HC SIGN
 L6.2 SCALE: 1"=1'-0"



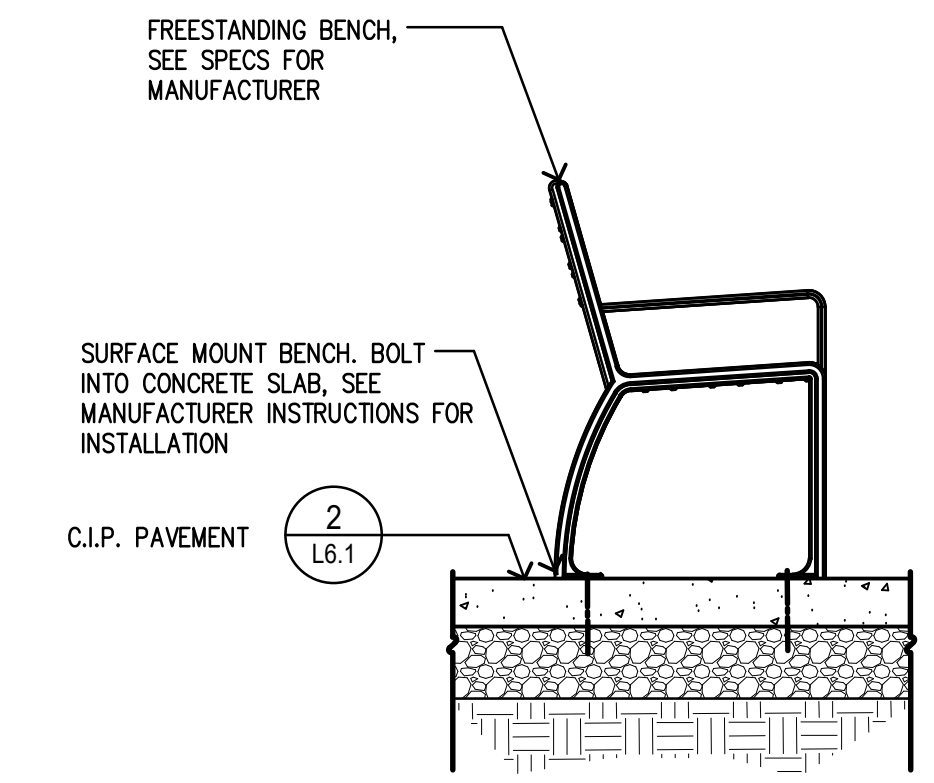
5 TRAFFIC SIGN
 L6.2 SCALE: 1"=1'-0"



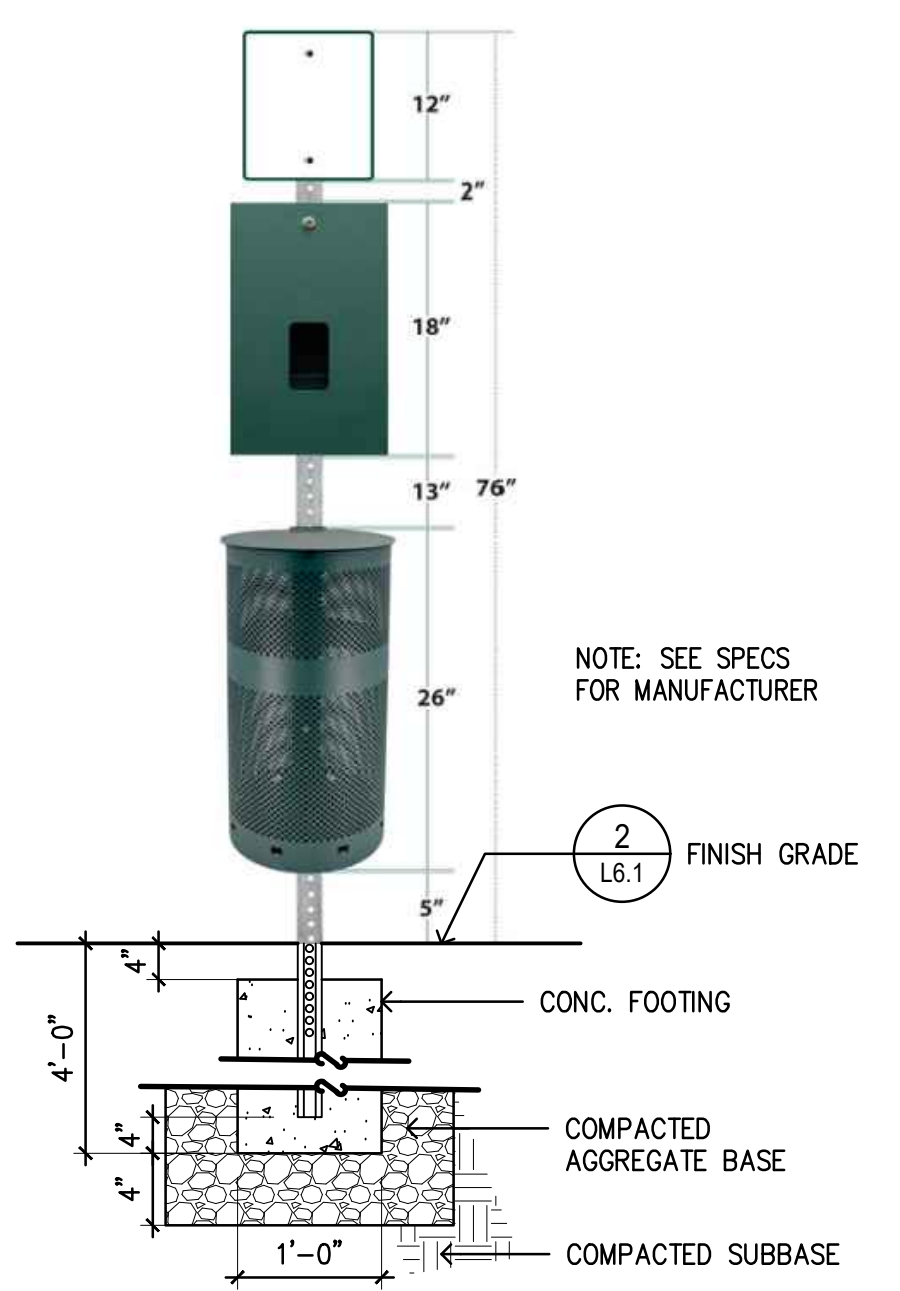
6 HANDICAPPED PARKING STRIPING
 L6.1 SCALE: 1/8"=1'-0"



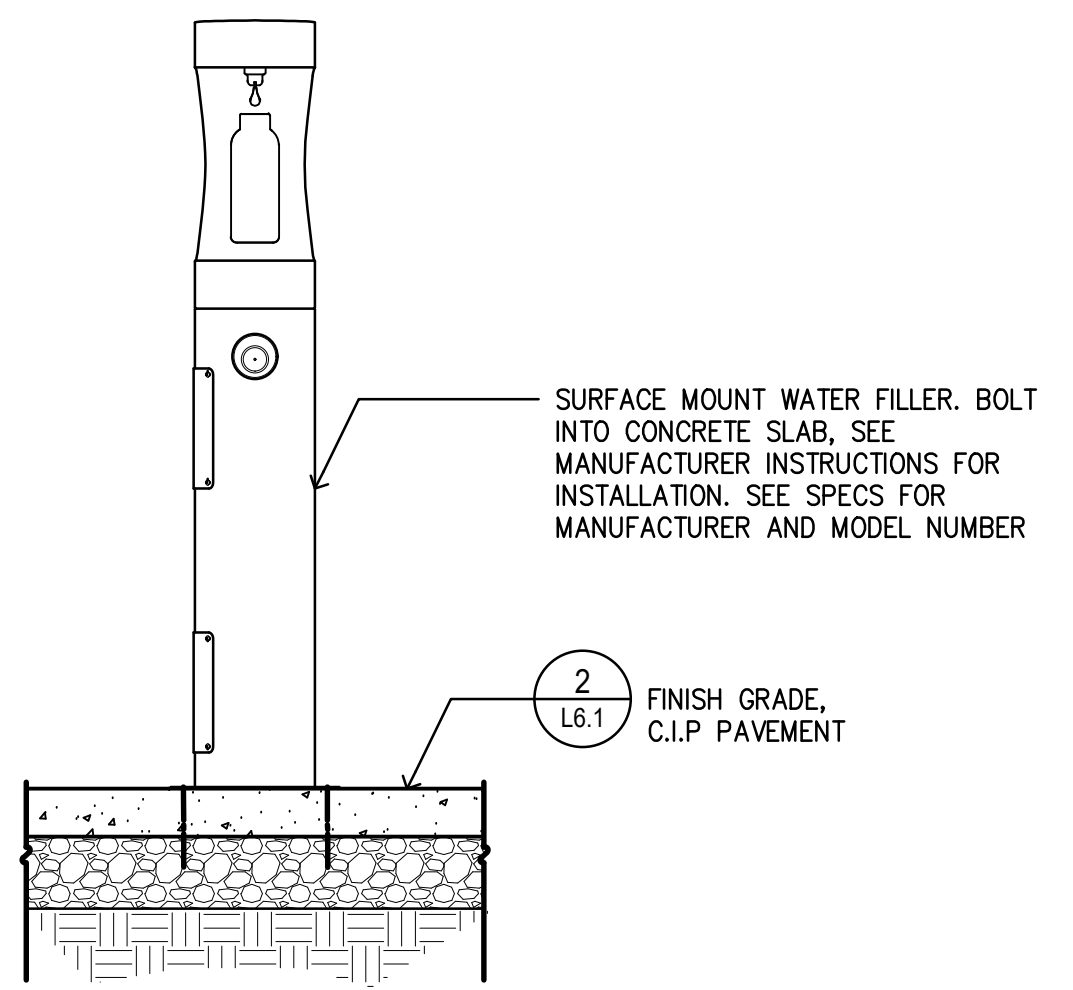
7 PAINTED CROSS WALK
 L6.1 SCALE: 1/4"=1'-0"



8 BENCH
 L6.2 SCALE: 1"=1'-0"



9 DOGIPOT RECEPTACLE
 L6.2 SCALE: 3/4"=1'-0"



10 WATER BOTTLE FILLER/BUBBLER
 L6.2 SCALE: 3/4"=1'-0"

Ashland Dog Park
 Memorial Drive
 Ashland, MA

Owner
 Town of Ashland
 Town Manager's Office
 101 Main Street
 Ashland, MA 01721

Landscape Architect

 Radner Design Associates, Inc.
 3 Allied Drive, Suite 303
 Dedham, MA 02026
 508.736.6144
 www.RadnerDesign.com

Civil Engineer

 HIGHPOINT ENGINEERING, INC.
 LAND PLANNING
 PERMIT EXPEDITING
 CIVIL ENGINEERING
 CONSULTING
 CANTON CORPORATE PLACE
 65 DANA ROAD, SUITE 400
 CANTON, MA 02021
 www.HighpointEng.com



Revision:
 Drawn: kc
 Checked: mr

Scale:
 Issue:

PLANNING BOARD
 AND
 CONSERVATION
 COMMISSION
 REVIEW

Sheet Name:
 Details 2

Project No.:
 24-08

Issue Date:
 10.01.2024

Sheet No.:
 L6.2