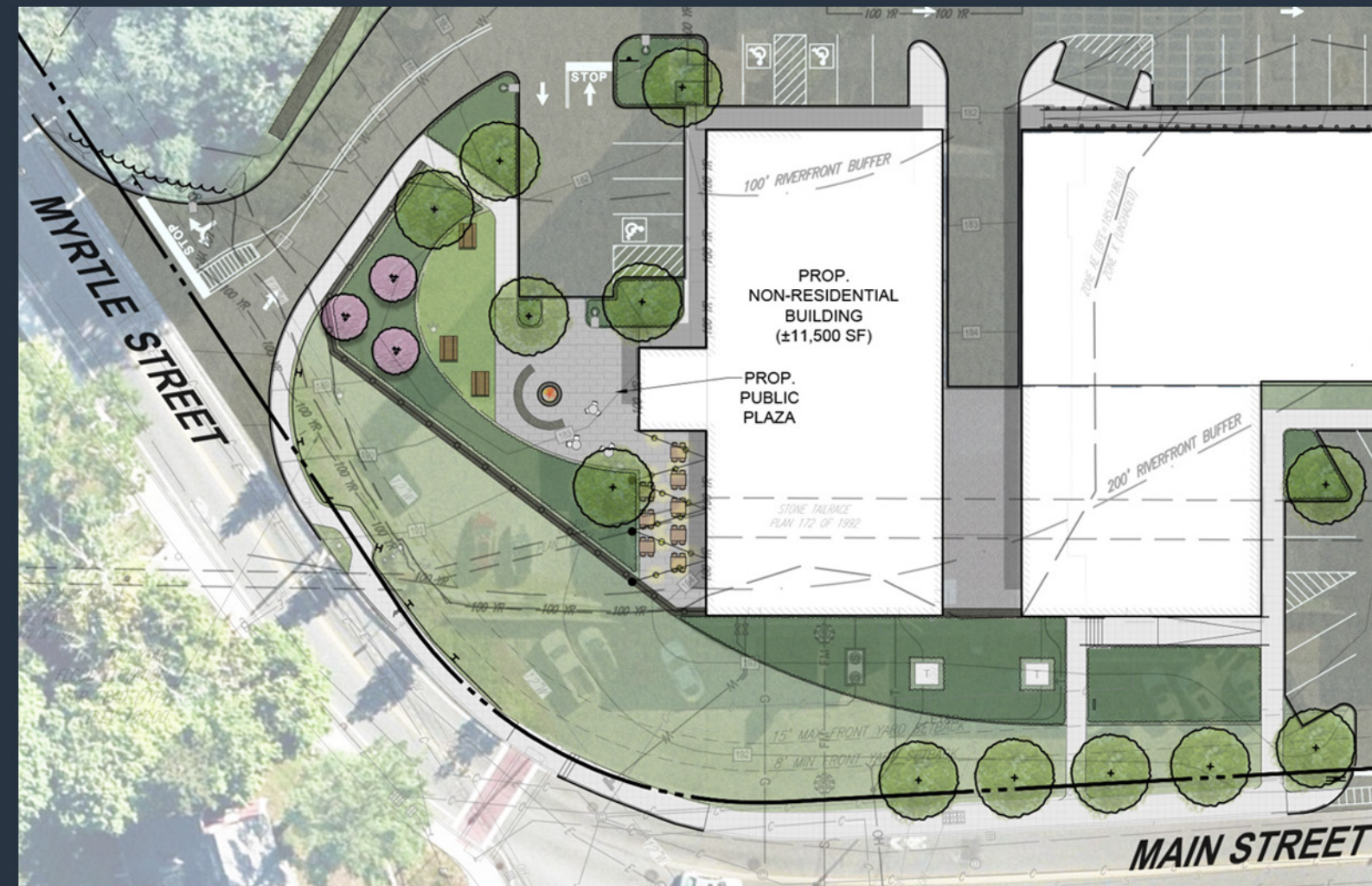




## Plan A: 220' Site Distance

- The proposed retaining wall is located closer to Main Street and its form relates to the street
- Landscape spaces create a gateway to the downtown Ashland
  - Public plaza space is visible from Myrtle Street
  - Trees along Main Street start at the bend in the road near Water Street
- The public space is larger, supporting larger social gatherings, and feels like a pocket park / intimate open space
- Landscape spaces frame and highlight the historic building/ landmark to be preserved



## Plan B: 290' Site Distance

- The proposed retaining wall tries to preserve the public plaza space while allowing for the 290' sight distance
- Open sight line area limits the potential of creating a sense of a gateway to downtown Ashland, the arrival experience feels empty
  - The retaining wall does not relate the streetscape, the landscape edge is a large open lawn area
  - Street trees begin after the historic building
- The pocket park reduces in size and has less usable area / capacity for gathering, becomes more of an entry plaza to the building
- Historic building feels ignored / left out of the design