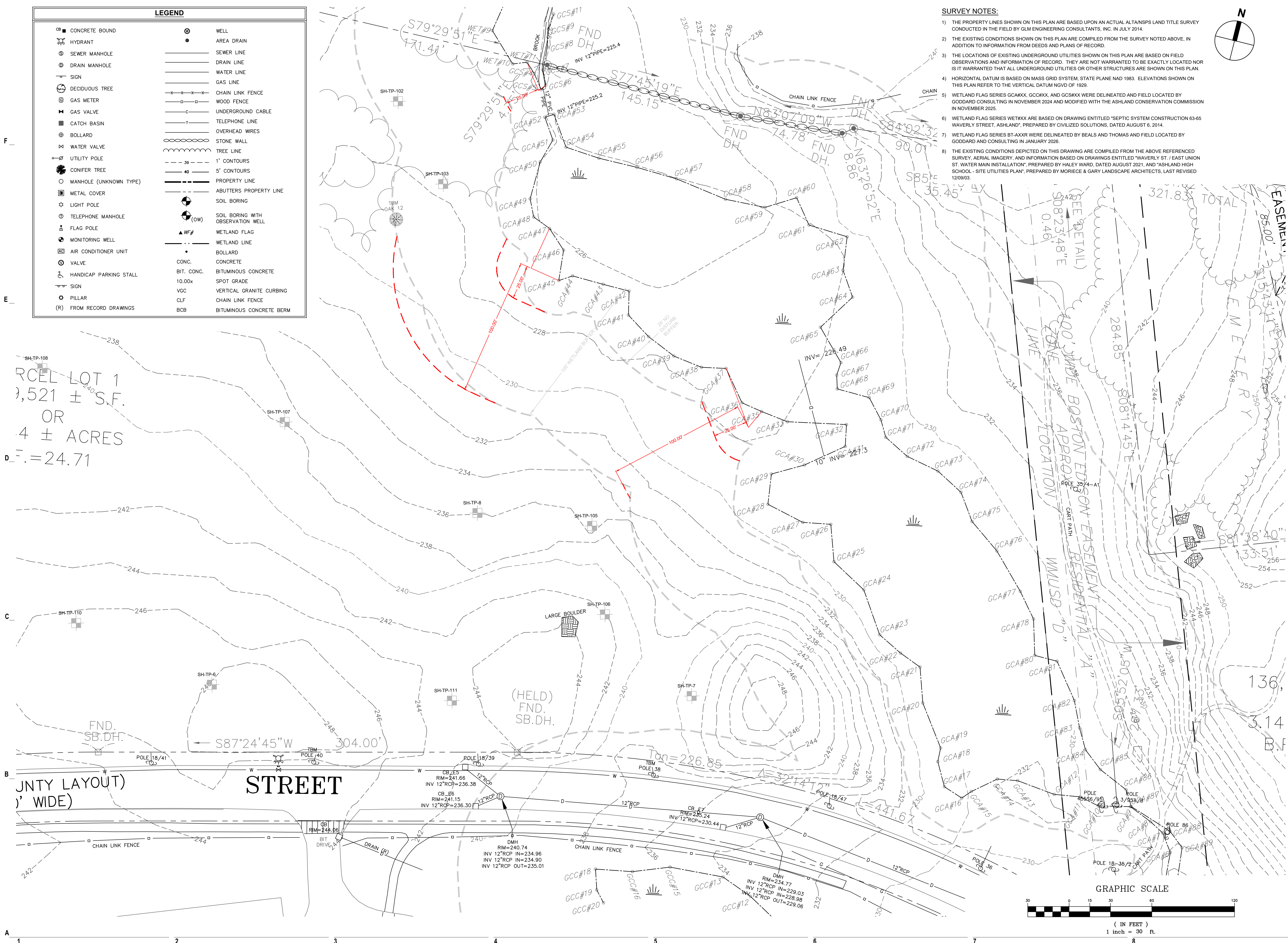


SURVEY NOTES:

- 1) THE PROPERTY LINES SHOWN ON THIS PLAN ARE BASED UPON AN ACTUAL ALTA/NPS LAND TITLE SURVEY CONDUCTED IN THE FIELD BY GLM ENGINEERING CONSULTANTS, INC. IN JULY 2014.
- 2) THE EXISTING CONDITIONS SHOWN ON THIS PLAN ARE COMPILED FROM THE SURVEY NOTED ABOVE, IN ADDITION TO INFORMATION FROM DEEDS AND PLANS OF RECORD.
- 3) THE LOCATIONS OF EXISTING UNDERGROUND UTILITIES SHOWN ON THIS PLAN ARE BASED ON FIELD OBSERVATIONS AND INFORMATION OF RECORD. THEY ARE NOT WARRANTED TO BE EXACTLY LOCATED NOR IS IT WARRANTED THAT ALL UNDERGROUND UTILITIES OR OTHER STRUCTURES ARE SHOWN ON THIS PLAN.
- 4) HORIZONTAL DATUM IS BASED ON MASS GRID SYSTEM, STATE PLANE NAD 1983. ELEVATIONS SHOWN ON THIS PLAN REFER TO THE VERTICAL DATUM NGVD OF 1929.
- 5) WETLAND FLAG SERIES GCA#XX, GCC#XX, AND GCS#XX WERE DELINEATED AND FIELD LOCATED BY GODDARD CONSULTING IN NOVEMBER 2024 AND MODIFIED WITH THE ASHLAND CONSERVATION COMMISSION IN NOVEMBER 2025.
- 6) WETLAND FLAG SERIES WET#XX ARE BASED ON DRAWING ENTITLED "SEPTIC SYSTEM CONSTRUCTION 63-65 WAVERLY STREET, ASHLAND", PREPARED BY CIVILIZED SOLUTIONS, DATED AUGUST 6, 2014.
- 7) WETLAND FLAG SERIES BT-AXXX WERE DELINEATED BY BEALS AND THOMAS AND FIELD LOCATED BY GODDARD AND CONSULTING IN JANUARY 2026.
- 8) THE EXISTING CONDITIONS DEPICTED ON THIS DRAWING ARE COMPILED FROM THE ABOVE REFERENCED SURVEY, AERIAL IMAGERY, AND INFORMATION BASED ON DRAWINGS ENTITLED "WAVERLY ST. EAST UNION ST. WATER MAIN INSTALLATION", PREPARED BY HALEY WARD, DATED AUGUST 2021, AND "ASHLAND HIGH SCHOOL - SITE UTILITIES PLAN", PREPARED BY MORIECE & GARY LANDSCAPE ARCHITECTS, LAST REVISED 12/09/03.

LEGEND			
CB	CONCRETE BOUND	WELL	WELL
HYDRANT	HYDRANT	AREA DRAIN	SEWER LINE
SEWER MANHOLE	SEWER MANHOLE	DRAIN LINE	DRAIN LINE
DRAIN MANHOLE	DRAIN MANHOLE	WATER LINE	WATER LINE
SIGN	SIGN	GAS LINE	GAS LINE
DECIDUOUS TREE	DECIDUOUS TREE	CHAIN LINK FENCE	CHAIN LINK FENCE
GAS METER	GAS METER	WOOD FENCE	WOOD FENCE
GAS VALVE	GAS VALVE	UNDERGROUND CABLE	UNDERGROUND CABLE
CATCH BASIN	CATCH BASIN	TELEPHONE LINE	TELEPHONE LINE
BOLLARD	BOLLARD	OVERHEAD WIRES	OVERHEAD WIRES
WATER VALVE	WATER VALVE	STONE WALL	STONE WALL
UTILITY POLE	UTILITY POLE	TREE LINE	TREE LINE
CONIFER TREE	CONIFER TREE	1' CONTOURS	1' CONTOURS
MANHOLE (UNKNOWN TYPE)	MANHOLE (UNKNOWN TYPE)	5' CONTOURS	5' CONTOURS
METAL COVER	METAL COVER	PROPERTY LINE	PROPERTY LINE
LIGHT POLE	LIGHT POLE	ABUTTERS PROPERTY LINE	ABUTTERS PROPERTY LINE
TELEPHONE MANHOLE	TELEPHONE MANHOLE	SOIL BORING	SOIL BORING
FLAG POLE	FLAG POLE	SOIL BORING WITH OBSERVATION WELL	SOIL BORING WITH OBSERVATION WELL
MONITORING WELL	MONITORING WELL	WETLAND FLAG	WETLAND FLAG
AIR CONDITIONER UNIT	AIR CONDITIONER UNIT	WETLAND LINE	WETLAND LINE
VALVE	VALVE	BOLLARD	BOLLARD
HANDICAP PARKING STALL	HANDICAP PARKING STALL	CONC.	CONCRETE
SIGN	SIGN	BIT. CONC.	BITUMINOUS CONCRETE
PILLAR	PILLAR	10.00x	SPOT GRADE
(R) FROM RECORD DRAWINGS	(R) FROM RECORD DRAWINGS	VGC	VERTICAL GRANITE CURBING
		CLF	CHAIN LINK FENCE
		BCB	BITUMINOUS CONCRETE BERM



THE RESIDENCES AT ASHLAND
61 WAVERLY STREET
ASHLAND, MA

DATE	DESCRIPTION
01/23/2026	RESPONSE TO COMMENTS
10/29/2025	NOTICE OF INTENT
10/16/2025	PLANS OF RECORD
08/27/2025	REVISION TO CURB CUT LAYOUT
08/19/2025	RESPONSE TO COMMENTS
08/09/2025	REVISION TO CURB CUT LAYOUT
05/20/2025	RESPONSE TO COMMENTS
02/10/2025	COMPREHENSIVE PERMIT

MARK: DATE: DESCRIPTION:
ISSUE LOG
△ = CLOUDED CHANGE

SCALE	1"=30'
DRAWN BY	JMK
CHECK BY	WWP
PROJ.ARCH.ENGR.	JAH
PROJ. MRG.	SAV
JOB NO.	24142.00

© SYMMES, MAINI & MCKEE ASSOCIATES, INC. 2025

REVISED WETLAND FLAGS

