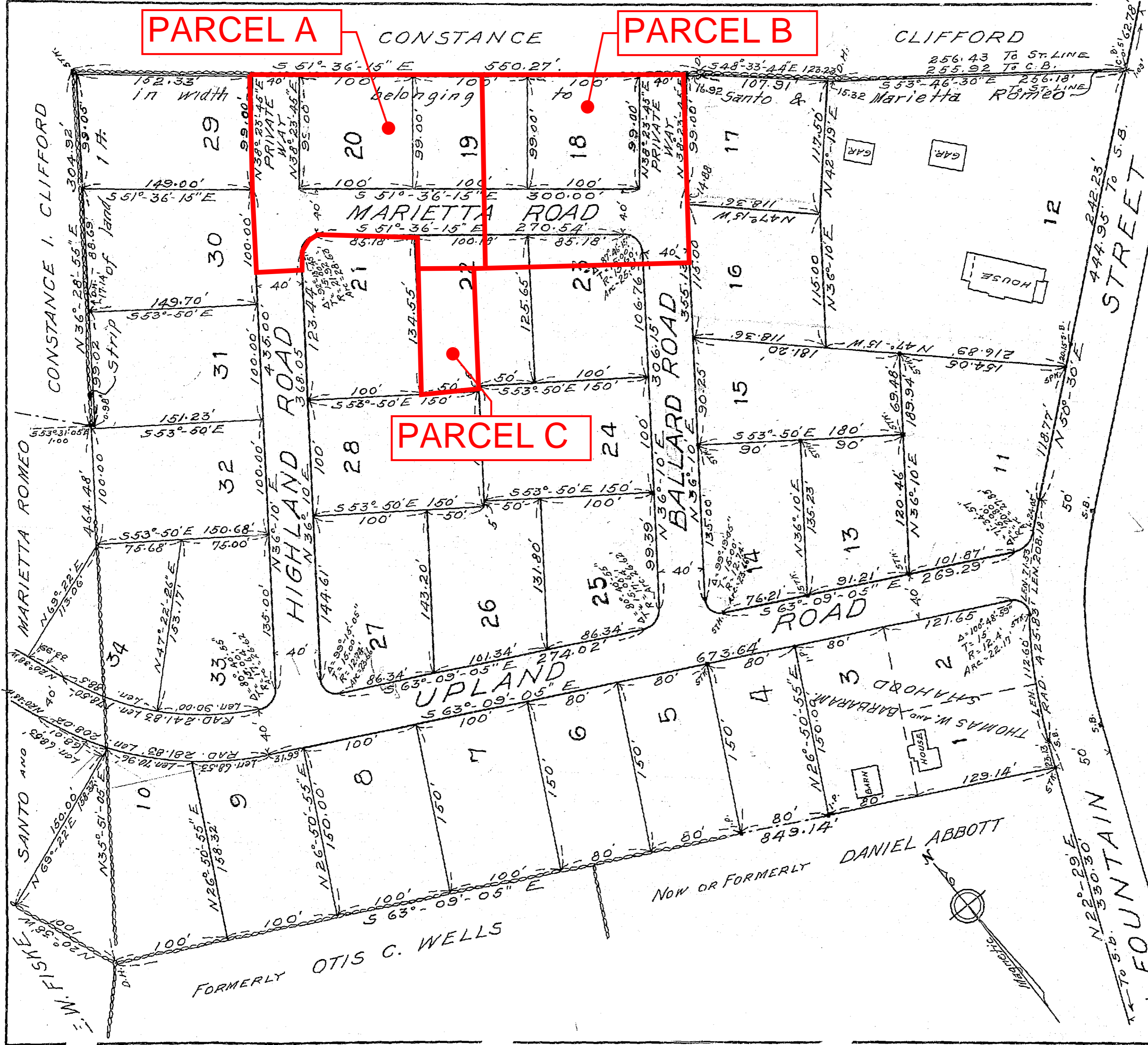


7530-51

96

3/5  
1" = 100'



PLAN OF LOTS  
 BELONGING TO  
**SANTO AND MARIETTA ROMEO**  
 ASHLAND, MASS.  
 Charles E. Dearborn, Engt. January 1950  
 SCALE ~ 1 INCH = 60 FEET.

Middlesex Registry of Deeds, So. Dist.  
 CAMBRIDGE, MASS.  
 Plan Number **76** of **1950**  
 Registered **JAN. 16 1950** at **2.125** in P.M.  
 by **ALONE** Reg. No. \_\_\_\_\_  
 Recorded, Book \_\_\_\_\_ Page \_\_\_\_\_  
*Albert P. Dearborn* REGISTER