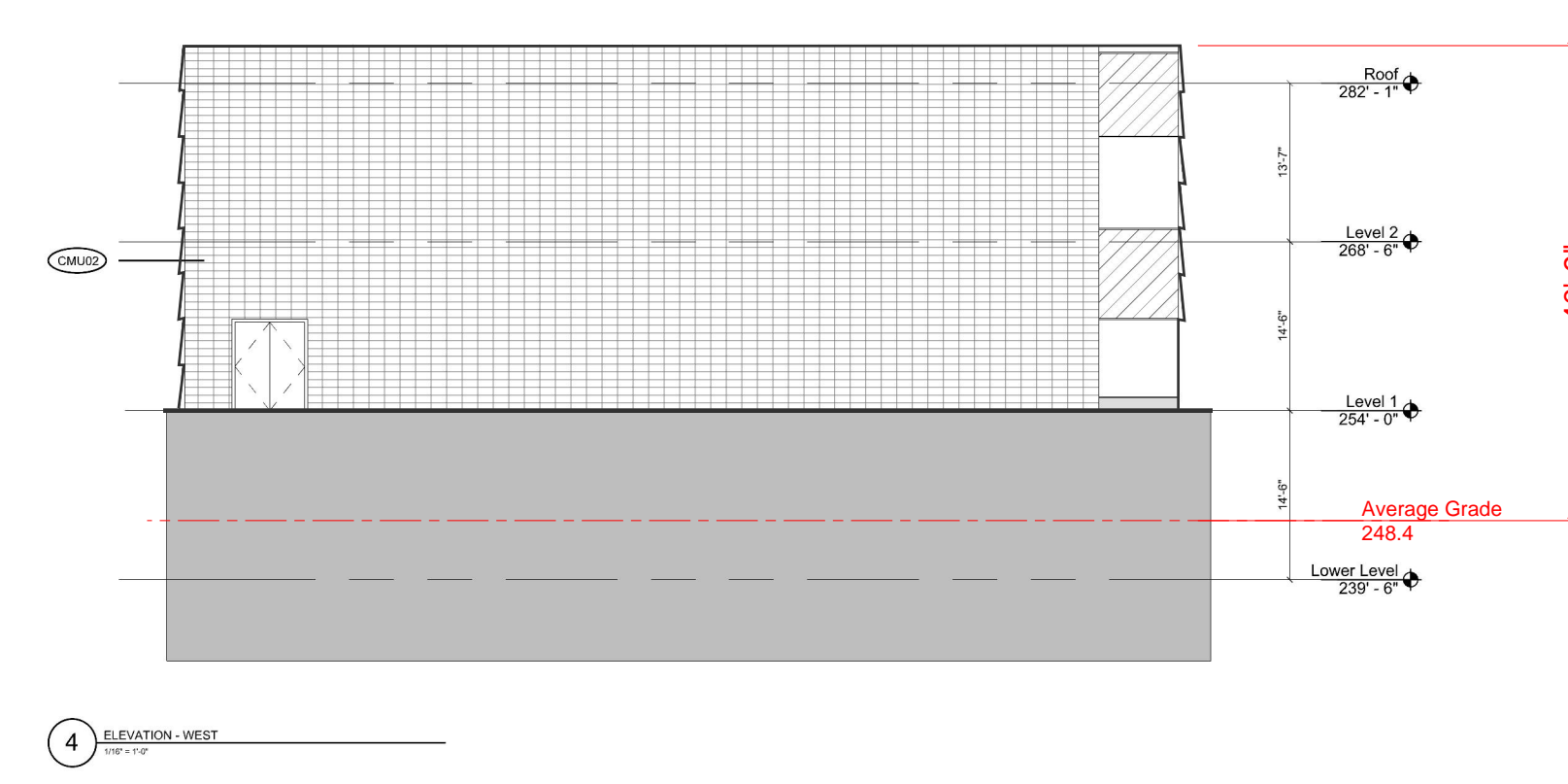
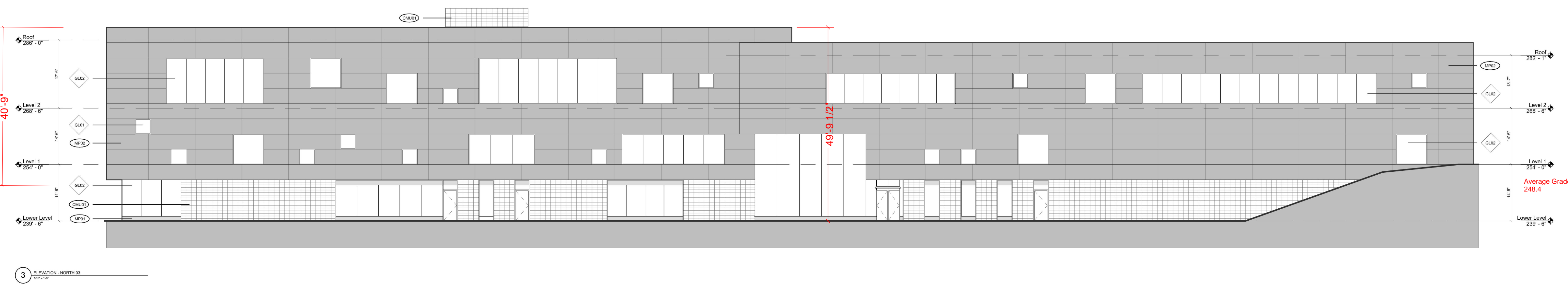
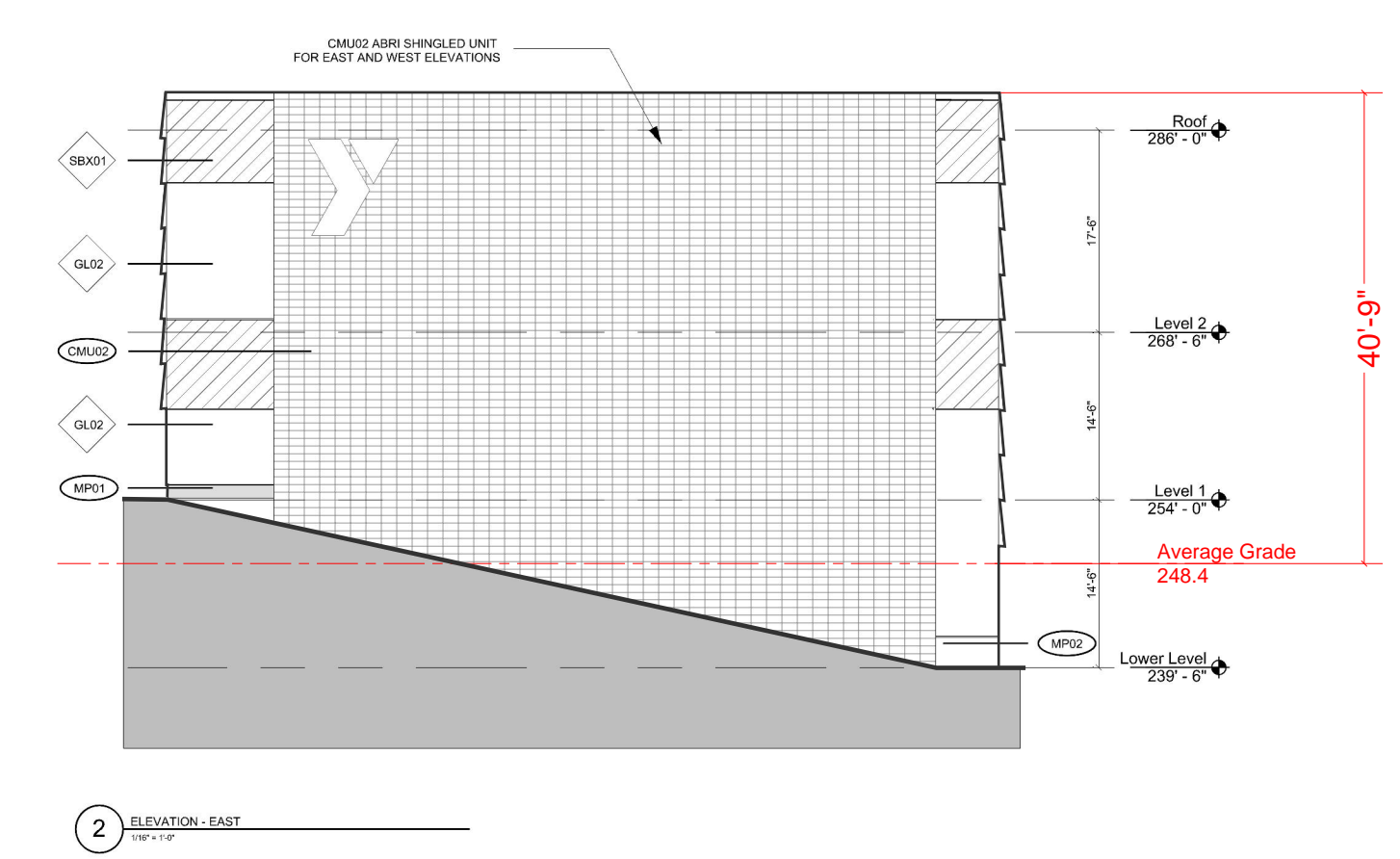
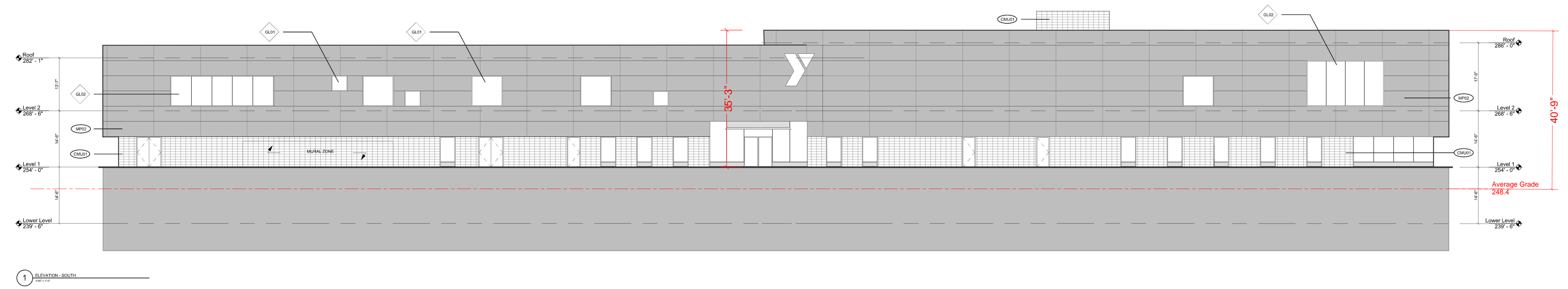


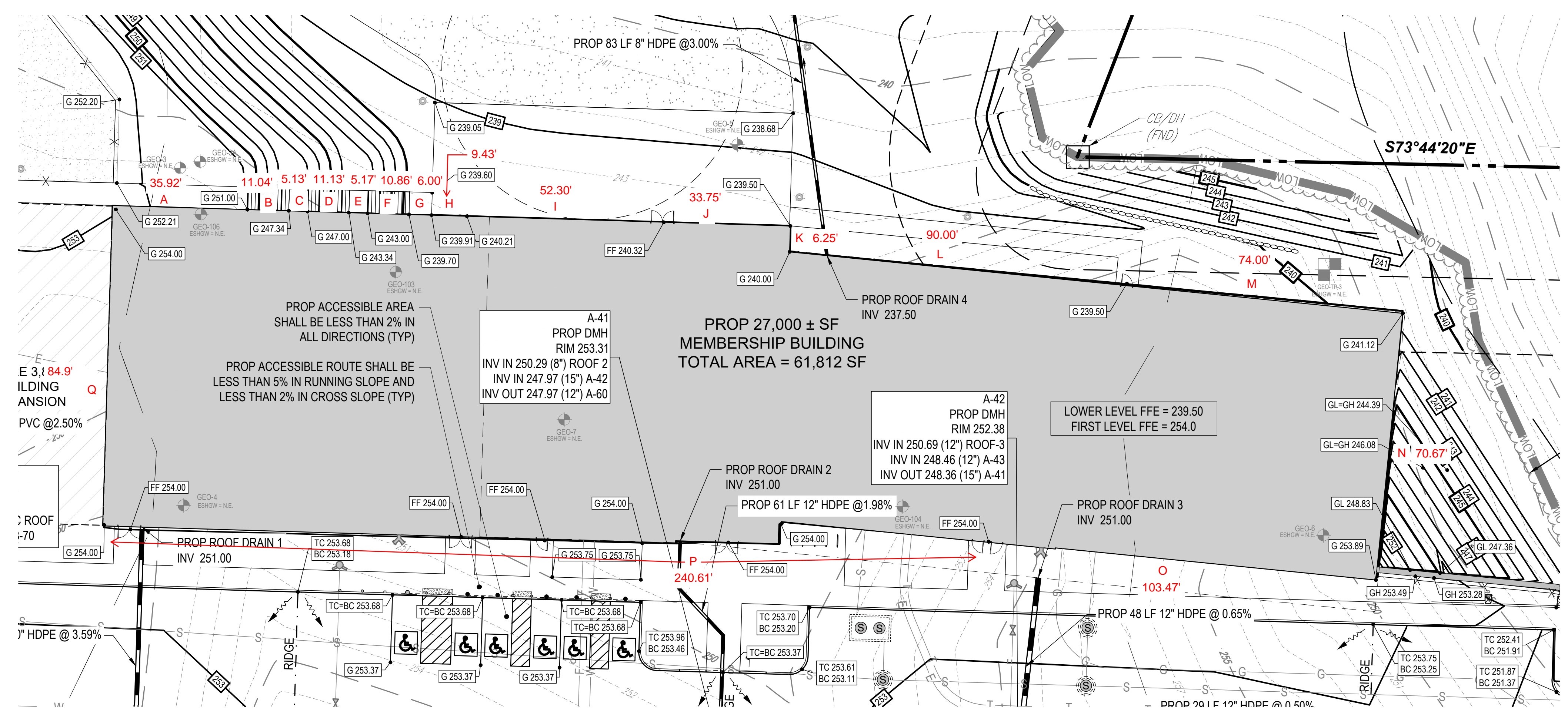
Elevations

EXTERIOR MATERIAL LEGEND

- CMU: CMU VENEER SPACING BRICK SMOOTHFACE (W/SPACER ONLY)
- ALU: ALUMINUM PANEL
- SPR: SPRINKLER PANEL BRICK
- TRP: TRIPLE GLAZED INSULATED GLAZING UNIT
- TRP: TRIPLE GLAZED INSULATED GLAZING UNIT BRG



Height on South (parking lot) side ~35' - 3"
 Height on North side ~49'-9 1/2"
 Height from Average Grade ~40'-9"



Excerpt from Grading Plan (not to scale)

Team Hoyt YMCA Average Grade				
	Spot Grade 1	Spot Grade 2	Length (ft)	Avg. Grade * Length
A	252.21	251	35.92	9037.65
B	251	247.34	11.04	2750.84
C	247.34	247	5.13	1267.98
D	247	243.34	11.13	2728.74
E	243.34	243	5.17	1257.19
F	243	239.7	10.86	2621.06
G	239.7	239.91	6	1438.83
H	239.91	240.21	9.43	2263.77
I	240.21	240.32	52.3	12565.86
J	240.32	240	33.75	8105.40
K	239.5	240	6.25	1498.44
L	240	239.5	90	21577.50
M	239.5	241.12	74	17782.94
N	241.12	253.89	70.67	17491.18
O	253.89	254	103.47	26275.69
P	254	254	240.61	61114.94
Q	254	253	84.9	21522.15
Totals:			850.63	211300.15
Average Grade (Avg. Grade * Length)/Total Length			248.40 ft	