

A photograph of a forest during autumn. The trees have vibrant orange, yellow, and red leaves. The ground is covered in fallen leaves and some large rocks. A semi-transparent grey banner is overlaid across the middle of the image, containing the text:

ASHLAND PUBLIC SAFETY BUILDING
SEPTEMBER 24, 2020

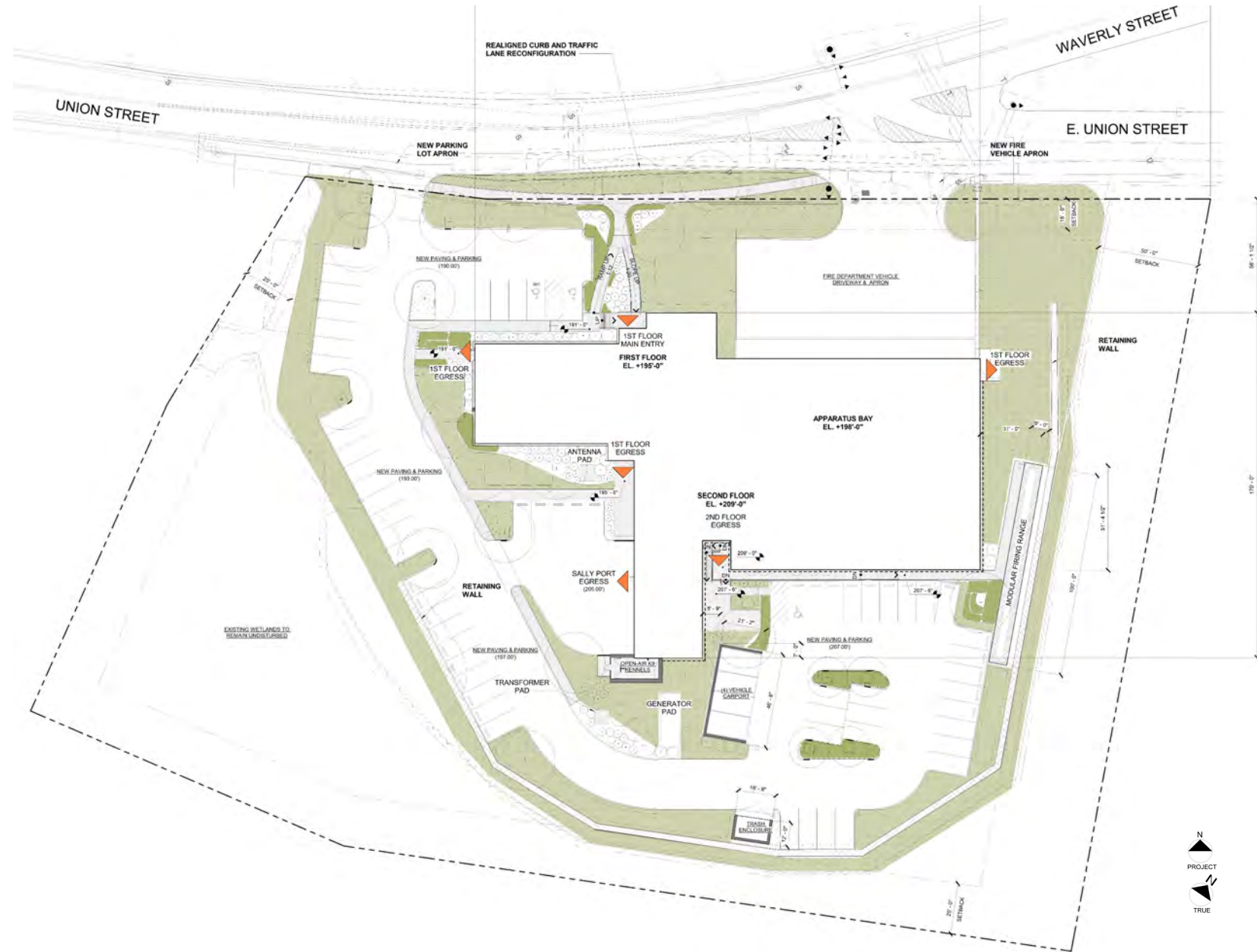
SITE CONSTRAINTS

- Property line
- Zoning setbacks
 - 25' front, back + side
 - 50' abutting residential property
- Topography
 - Total 35' grade change
 - Rises to the east
- Wetlands
 - Wetlands – 5,000 sf off-site replication
- Geotechnical investigations
 - Bedrock elevations
- Traffic analysis



PROPOSED SITE PLAN

- One entry to public and staff parking, Sally Port + Shooting Range
- Significant setback from street
- Public parking in front + on side
- Staff and cruisers/admin vehicles in back
- Apparatus exit from northeastern portion of site
- Rear parking area layout may be altered depending on final access easement agreement to rear parcel

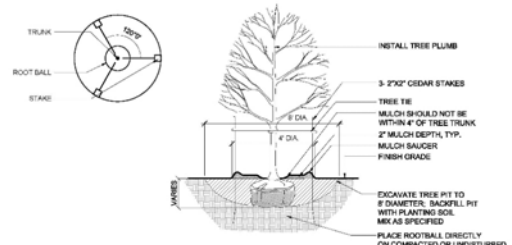
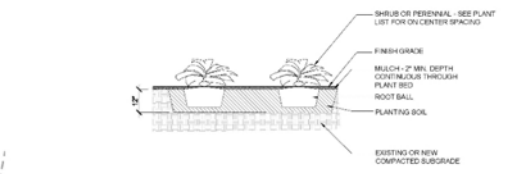
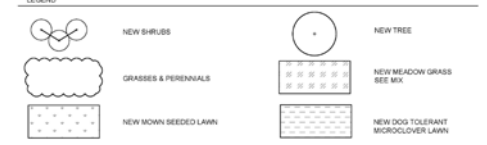


PROPOSED LANDSCAPE PLAN

- Native Trees + Shrubs selected for drought tolerance, spring flowering and/or fall color
- Meadow Grasses minimize maintenance
- Shade trees at Union Street enhance pedestrian experience



QTY	KEY	BOTANICAL NAME	COMMON NAME	MIN. SIZE/ SPACING	REMARKS
TREES					
10	AR	ACER RUBRUM 'AUTUMN SPHRE'	AUTUMN SPHRE RED MAPLE	3" CAL	
3	CC	COTYNE COCOGYRIA ROYAL PURPLE	SMOKETREE	10" HT MULTISTEM	
2	CT	CORYLUS COLURNA	TURKISH FILBERT	3" CAL	
5	CV	CRATAEGUS VIRGINS WINTER KING	WINTER KING HAWTHORNE	3" CAL	
1	LS	LIQUIDAMBAR STRYCIPLIA	SWEETGUM	3" CAL	
5	UP	ULMUS PARVIFOLIA 'ALEE'	ALLEE CHINESE ELM	3" CAL	
3	QP	QUERCUS PALMISTRIS	PIN OAK	3" CAL	
SHRUBS					
3	BM	BELIUS GREEN GEM	GREEN GEM BOXWOOD	18" HT B&B	
36	CA	CLETHRA ALNFOLIA 'SIXTEEN CANDLES'	SIXTEEN CANDLES SUMMERWEET	#3 CONTAINER	
9	CK	CORNUS 'KELSEY'	KELSEY DOGWOOD	#3 CONTAINER	
2	CS	CORNUS SERICEA 'ISANTI'	ISANTI DOGWOOD	#3 CONTAINER	
24	CR	CORNUS RACEMOSA 'EMERALD'	SNOW LACE GRAY DOGWOOD	#3 CONTAINER	
18	DL	DIERVILLA LONDEIRA	BUSH HONEYBUCKLE	#3 CONTAINER	
3	IG	ILEX GLABRA 'SHAMROCK'	SHAMROCK HIBERNY	#3 CONTAINER	
14	MP	MYRICA PENNSYLVANICA	BAYBERRY	#3 CONTAINER	
2	PM	PRUNUS MARITIMA	BEACH PLUM	#5 CONTAINER	
160	RA	RHUS AROMATICA 'GRO LOW'	GRO LOW SUMAC	#3 CONTAINER	
5	RV	ROSA VIRGINIANA	VIRGINIA ROSE	#3 CONTAINER	
10	SP	SYRINGA PATULA 'MISS KIM'	MISS KIM LILAC	#3 CONTAINER	
GRASSES, PERENNIALS AND VINES					
22	CF	CALAMAGROSTIS KARL FOERSTER	FEATHER REED GRASS	#3 @ 24" OC	
40	ET	ECHINACEA TWILIGHT	TWILIGHT PURPLE CONEFLOWER	#1 @ 15" OC	
42	HN	HEMEROCALLIS HAPPY RETURNS	HAPPY RETURNS DAYLILY	#2 @ 18" OC	
20	LM	LAMNUM MACULATUM	SPOTTED DEAD NETTLE	4" POT	
50	NF	HEPHTATA FAGE WALKERS LOW	CATMINT	#2 @ 24" OC	
11	PA	PEROVSKIA ATRIP 'ELISE JEAN BABY'	RUSSIAN BAGE	#2 @ 24" OC	
14	PQ	PANTHEMOICISBUS GUNIG	VIRGINIA CREEPER	#3 @ 15" OC	
45	PV	PANICUM NORTH BIRD	SWITCH GRASS	#3 @ 30" OC	
8	RN	RUBRICOCHIA NITIDA 'AUTUMN SUN'	AUTUMN SUN CONEFLOWER	#2 @ 24" OC	



SITE LIGHTING

- Building is illuminated with wall sconces
- All lighting is LED + dark sky compliant
- Site area lighting for parking is on 13.5 ft. high poles
- Illumination is limited to property boundaries



LIGHTING FIXTURE SCHEDULE

TYPE	MANUFACTURER	MODEL / SERIES	MTG.	MOUNTING HEIGHT	LIGHT SOURCE			DESCRIPTION
					LUMENS	WATTS	TYPE	
EX1	TECH LIGHTING	ZUR 12	W	10'	900	11	LED4000K	DECORATIVE LED WALL MOUNTED AREA LIGHTING FIXTURE WITH FULL CUT-OFF TYPE IV DISTRIBUTION AND REMOTE BATTERY BACK UP.
EX2	LUMENS	SINTRA BOLLARD	B	3.5'	1000	28	LED4000K	BOLLARD FIXTURE FOR EGRESS PATHWAYS
EX3	LITHONIA	WDE2-P4-40K-80CRI-VF-MVOLT	W	10'	4500	30	LED4000K	LED WALL MOUNTED AREA LIGHTING FIXTURE WITH FULL CUT-OFF TYPE II DISTRIBUTION, HOUSE SIDE SHIELD, AND 0-10V DIMMING CAPABILITY.
EX4	GARDCO	ECF-S-32L-530-NW-G2-AR-4-DD-HIS	POLE	16'	6715	56	LED4000K	LED SINGLE HEAD FIXTURE WITH TYPE IV DISTRIBUTION MOUNTED ON 13.5' TALL ROUND ALUMINUM TAPERED POLE.
EX4.1	GARDCO	ECF-S-32L-530-NW-G2-AR-4-DD-XX	POLE	16'	14,050	56	LED4000K	LED DOUBLE HEAD FIXTURE WITH TYPE II DISTRIBUTION MOUNTED ON 13.5' TALL ROUND ALUMINUM TAPERED POLE.
EX5	LITHONIA	VAP-400LM-FST-WD-MVOLT-G210-40K-80CRI-XX	S	10'	3811	32.9	LED4000K	LED SURFACE MOUNTED VAPORTIGHT FIXTURE WITH FROSTED POLY CARBONATE LENS AND 0-10V DIMMING CAPABILITY.



FIRST FLOOR PLAN

- Main Public Entry with Lobby
- Dispatch, Records + Meeting Room all located off Lobby
- Secure elevator to Third Level Administration Areas
- Police Operations, Sally Port + Detention
- Fire Apparatus + Support Areas



SECOND FLOOR PLAN

- Police Support Areas including Locker Rooms
- Fire Living Quarters
- Portion of Mezzanine above Apparatus Bays dedicated to Fire Operations
- Other Portion reserved for Mechanical & Electrical Systems



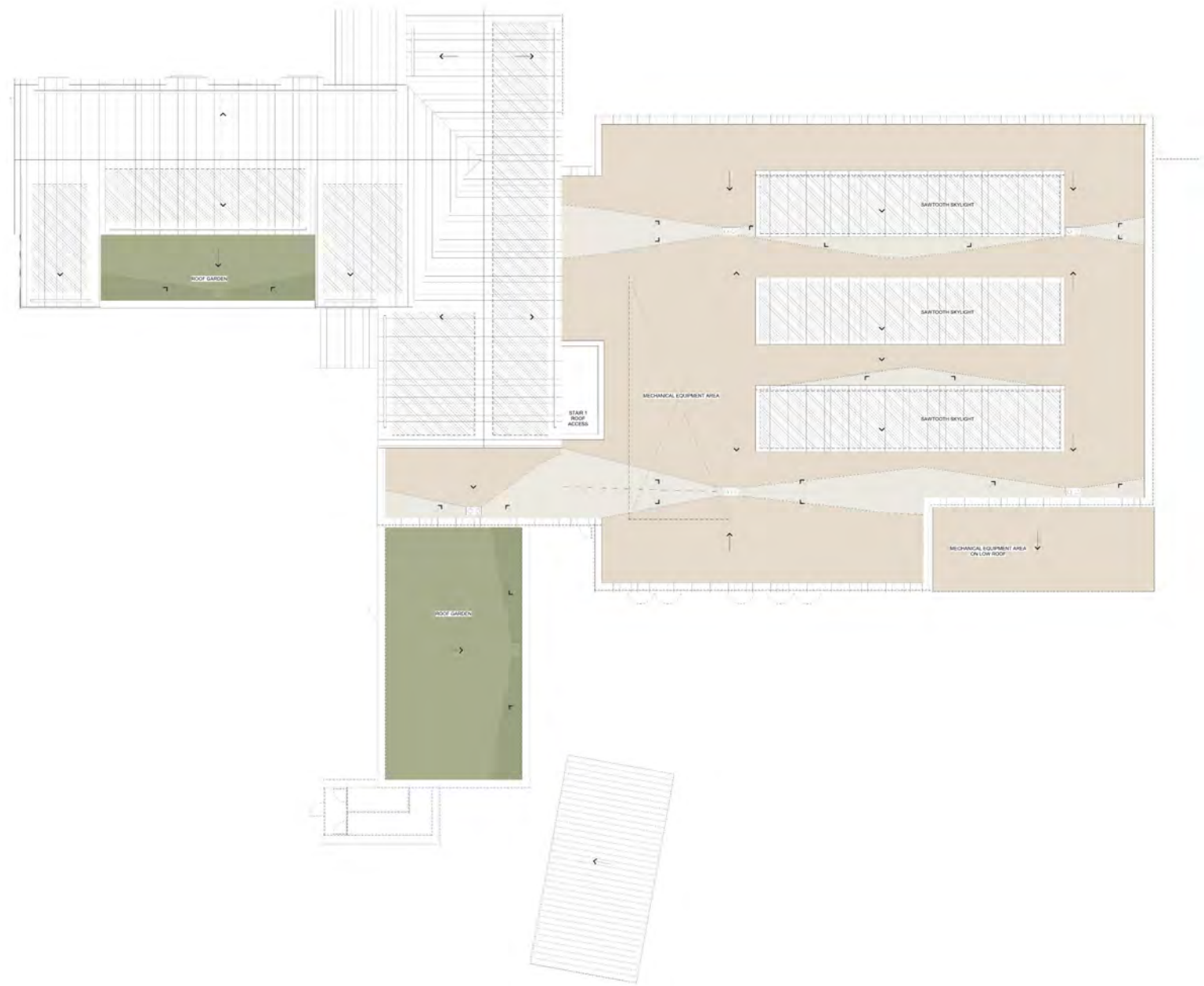
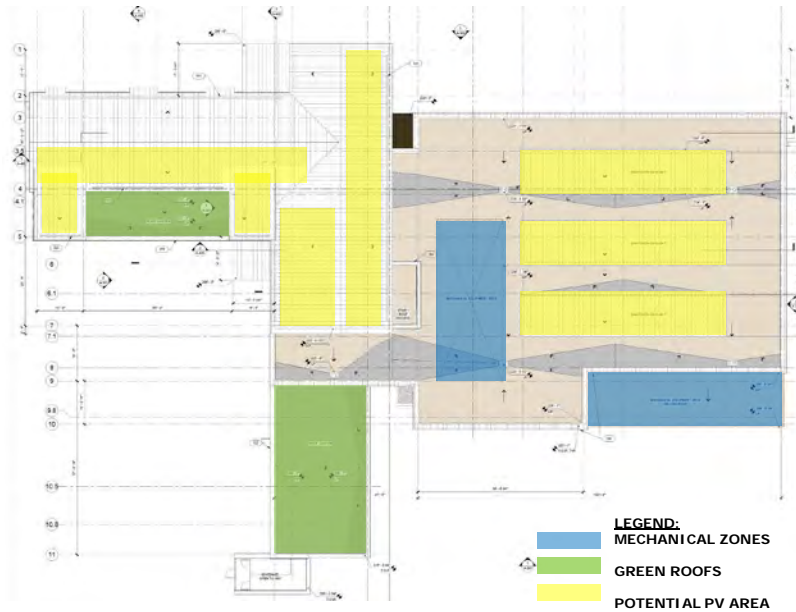
THIRD FLOOR PLAN

- Police Administration
- Fire Administration
- Both Areas accessed from Shared Elevator Lobby



ROOF PLAN

- Green Roofs
- Solar Ready

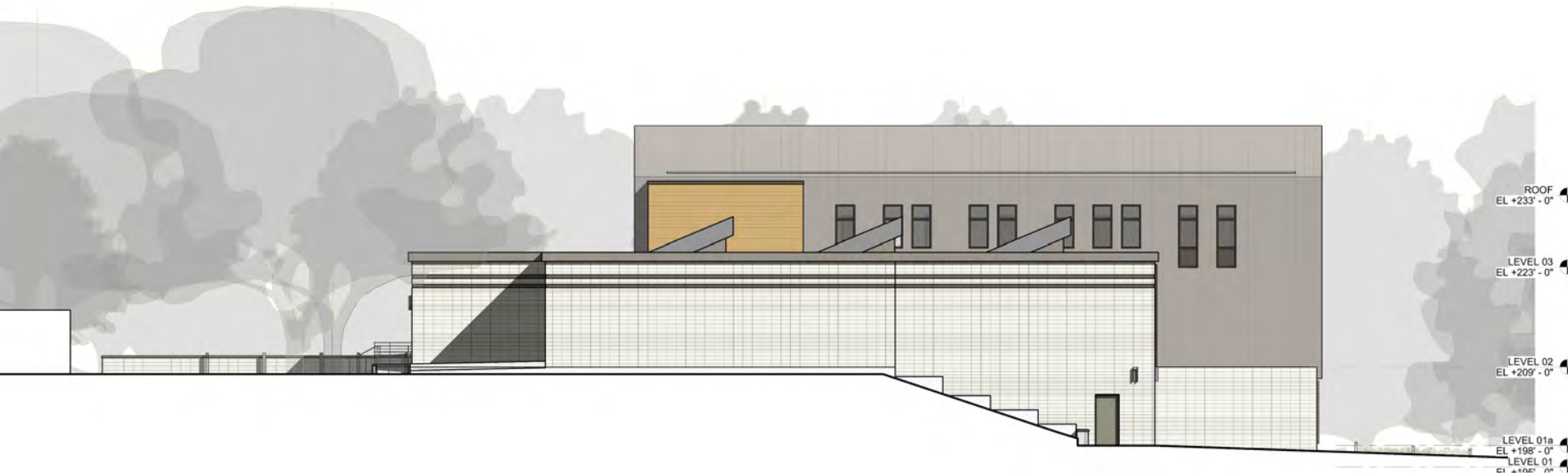


NORTH ELEVATION



- Materials: Masonry Walls; Standing Seam Metal Siding on Upper Levels + on Pitched Roofs; Fiber Cement Siding on Gabled End Walls
- Forms + Visuals: Varying Heights of Building, Roof Pitches, Bays + Window Patterns + Proportions; Clerestory + Monitor Daylighting
- Details: Clock, Wall Mounted Lighting, Signage, Fenestration Accent Framing

EAST ELEVATION



- Front to Rear Site: Significant Change in Grade
- Height of Apparatus Bays to Height of Remainder of Building
- Variety of Roof Planes: Pitched Roofs + Flat Roof with Monitors
- Masonry Reveals + Parapet Coping for Visual Interest at Apparatus Bay

SOUTH ELEVATION



- West to East: Significant Change in Grade
- Separate Rear Entries / Exits for Staff
- Private Outdoor Seating Areas for Staff
- Parking, Utility Spaces + Operational Areas are Concentrated to the Rear of the Site

WEST ELEVATION



- Height of Sally Port / Detention Area to Administration portion of Building
- West Elevation reflects North Elevation where Building Turns from Public Face to Operational Space
- Separate Side + Rear Entry for Staff
- Building Massing Steps Down as Site Elevation Rises

VIEW FROM UNION STREET, HEADED WESTBOUND

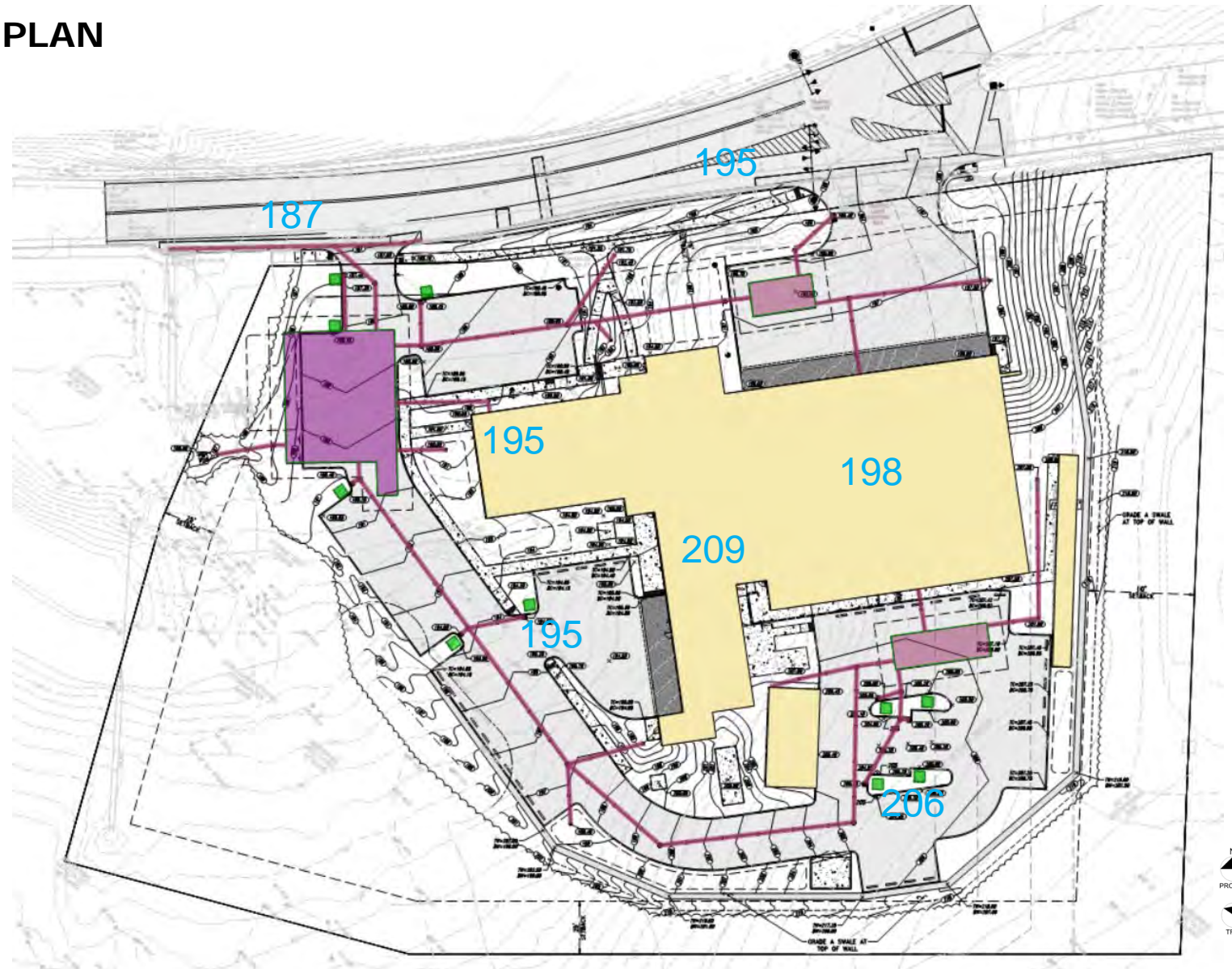


VIEW FROM UNION STREET, HEADED EASTBOUND



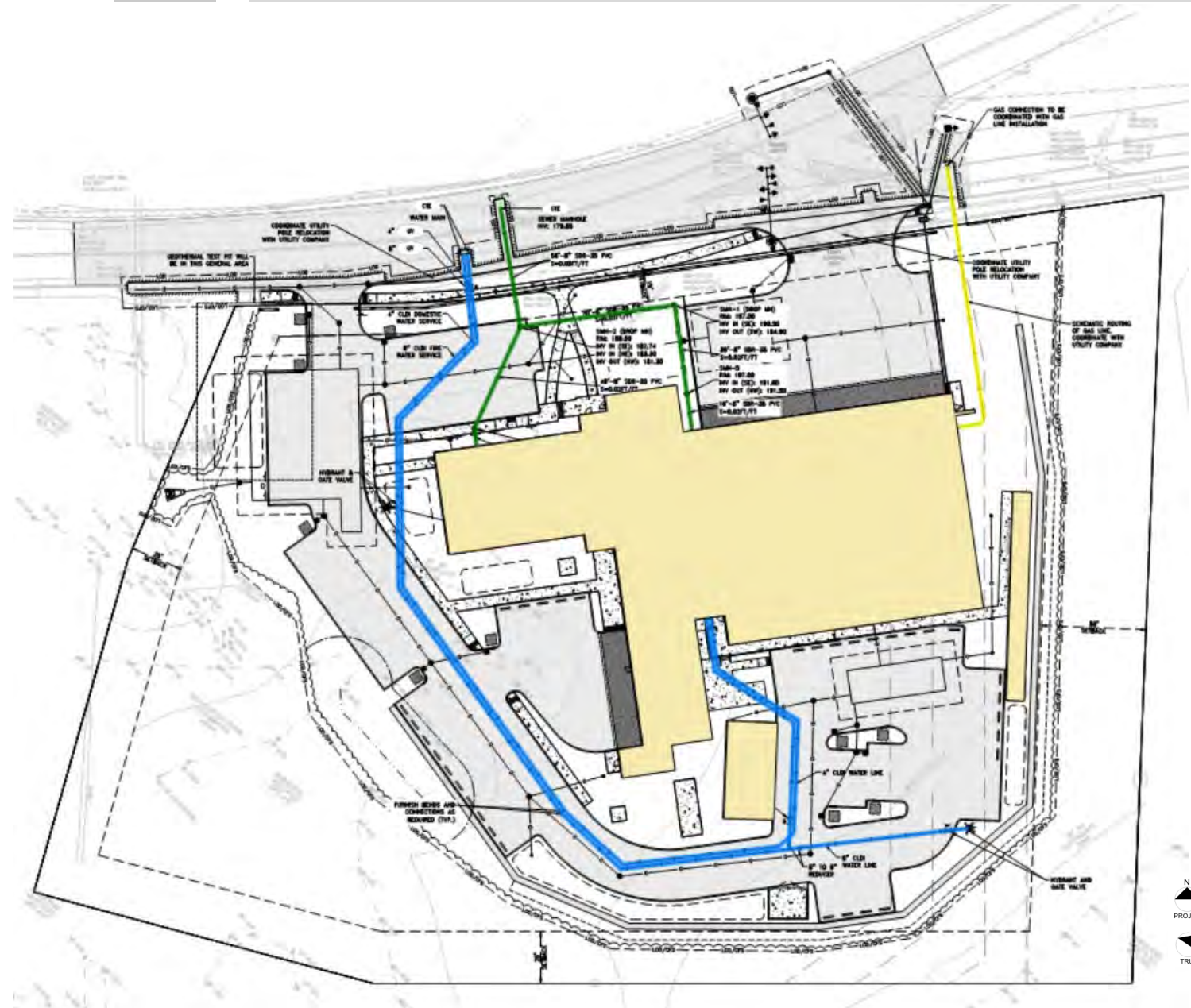
PROPOSED GRADING AND DRAINAGE PLAN

- Grading
 - Split Finish Floor Elevations
 - Walls at perimeter of site
 - Underdrains to protect structures from groundwater
- Drainage
 - Water quality treatment from Tree Box Filters and Green Roof
 - Peak flow attenuation and recharge from Detention Systems and Infiltration System
 - Discharge point at southwest corner of the site



PROPOSED UTILITY PLAN

- Water:
 - Separate 8" Fire Service and 4" Domestic Service to utility room in rear of building
- Sewer:
 - Services exit at the front of building
- Gas:
 - Meter at the north corner of the building



TRAFFIC ANALYSIS AND DESIGN

- Utilize separate mast arms to reposition the signal heads for the southbound and westbound approaches to reduce the existing ambiguity
- Add signal heads facing the fire station apron
- Create a separate right turn lane back to the Public Safety Building driveway to allow free-right turn movement during the East Union phase of the signal cycle
 - Shift the centerline north + the southern curb south to widen the roadway in front of the station
 - Analysis shows a significant improvement in LOS.

